

Elevate Squared Installation Guide

Issue 2 – Nov 2019

elevate



Contents

| | |
|------------|---|
| 1.0 | Introduction |
| 1.1 | Tools and Consumables Required |
| 1.2 | Kit Components |
| 2.0 – 2.13 | Elevate Squared Installation Instructions |
| 3.0 | Installation Supplies and Installer Support |

1.0 - Introduction

This installation guide has been created to assist in constructing Elevate Squared from a kit format.

To ensure the proper functioning of Elevate Squared, it is imperative that the instructions in this guide are followed in the order shown.

Care of Products

When storing, handling or erecting your Elevate Squared lantern roof kit, please be aware of the following:

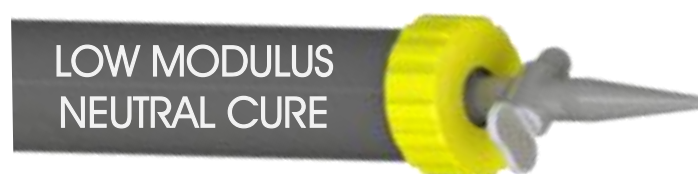
- When unwrapping, take care not to damage products with a knife.
- Always check components before installing.
- PVCu components should not be left out in freezing conditions.
- Do not leave wrapped coloured foiled components in direct heat or sunlight.
- Use care when applying force fitting caps/trims.

Sealing

If sealant is used on your Elevate Squared lantern roof kit, it is essential that the correct sealant is used. The diagrams below show the required sealant-dependent upon the glazing material used.



- Self cleaning glass



- Standard sealed units

For a perfect colour match, use the Liniar Approved range. See www.liniar.co.uk/supplies for details.

Further Assistance

Your Elevate Squared lantern roof kit should include all the information you need – but if you do need to get in touch with any queries, please use the contact details found on the back cover.

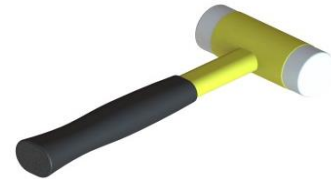
1.1 - Tools and Consumables Required



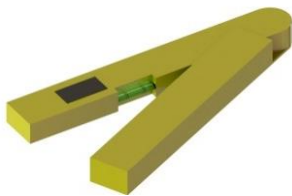
Cordless Drill
With Pozi bits and suitable drills for pilot holes in aluminium



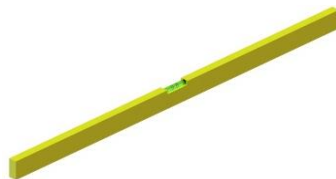
Utility Knife
General use



Glazing Hammer
Fitting trims and caps



Angle Finder
General measuring and checking of angles/pitches



Spirit Level
General level checking



Tape Measure
General measuring and checking



5mm Allen Key
Fitting hip bars to the ridge end boss

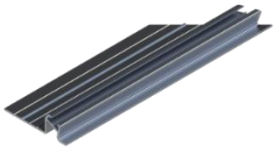


Sealant
With silicone gun

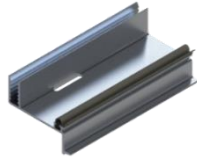


10mm Socket Wrench
Secure all roof bars

1.2 - Kit Components



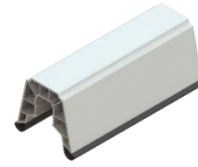
Wall Rail Assembly



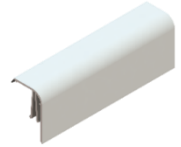
Glazing Retainer



Hip Bar Assembly



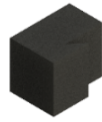
Hip EnergyPlus Top
Cap
LZPE0042



Glazing Trim
LZPE0028



Roof Bar
End Cap
LZMP0052



Hip Bar
Foam
Bung
LZSU0099



100mm Wall
Rail Cloaking
Foam
LZSU0100



90°
Horizontal
Joining Plate
LZSU0001



M6
Flange
Nuts
LZFX0018



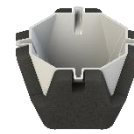
Square External
Centre Cover
LZMP0079



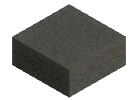
Square Internal
Centre Cover
LZMP0080



Square
Centre Boss
LZSU0101

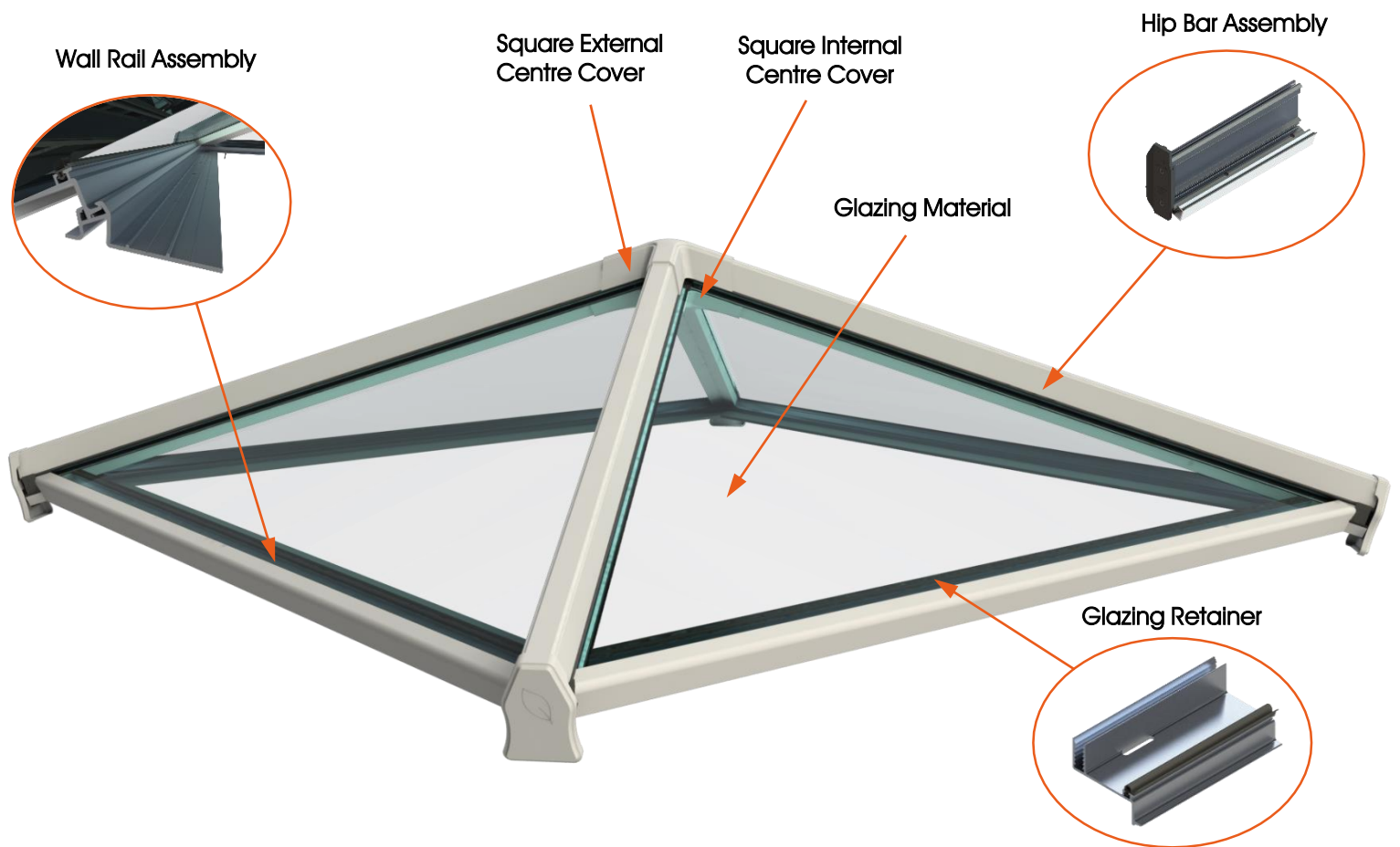


Square
Weather
Dam
LZSU0102

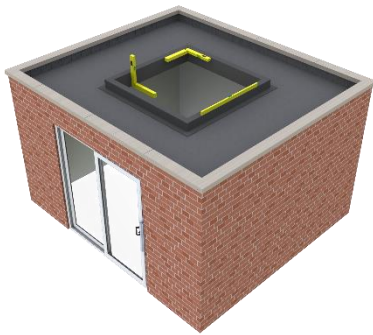


Square
Foam Bung
LZSU0103

2.0 - Elevate Squared Installation Instructions



Installation Steps:



Preparation
Section 2.1, pages 8-9



Wall Rail Assembly
Section 2.2, pages 10-11



Glazing Retainer and Cloaking Foam Assembly
Section 2.3, pages 12-13



Hip Bar Assembly
Section 2.4, pages 14-15



Centre Boss Assembly
Section 2.5, pages 16-17



Internal Centre Cover Assembly
Section 2.6, pages 18-19



Centre Foam Assembly
Section 2.7, pages 20-21



Glazing Assembly
Section 2.8, pages 22-23



Hip Bar Foam Assembly
Section 2.9, pages 24-25



Top Cap Assembly
Section 2.10, pages 26-27



Square Weather Dam Assembly
Section 2.11, pages 28-29



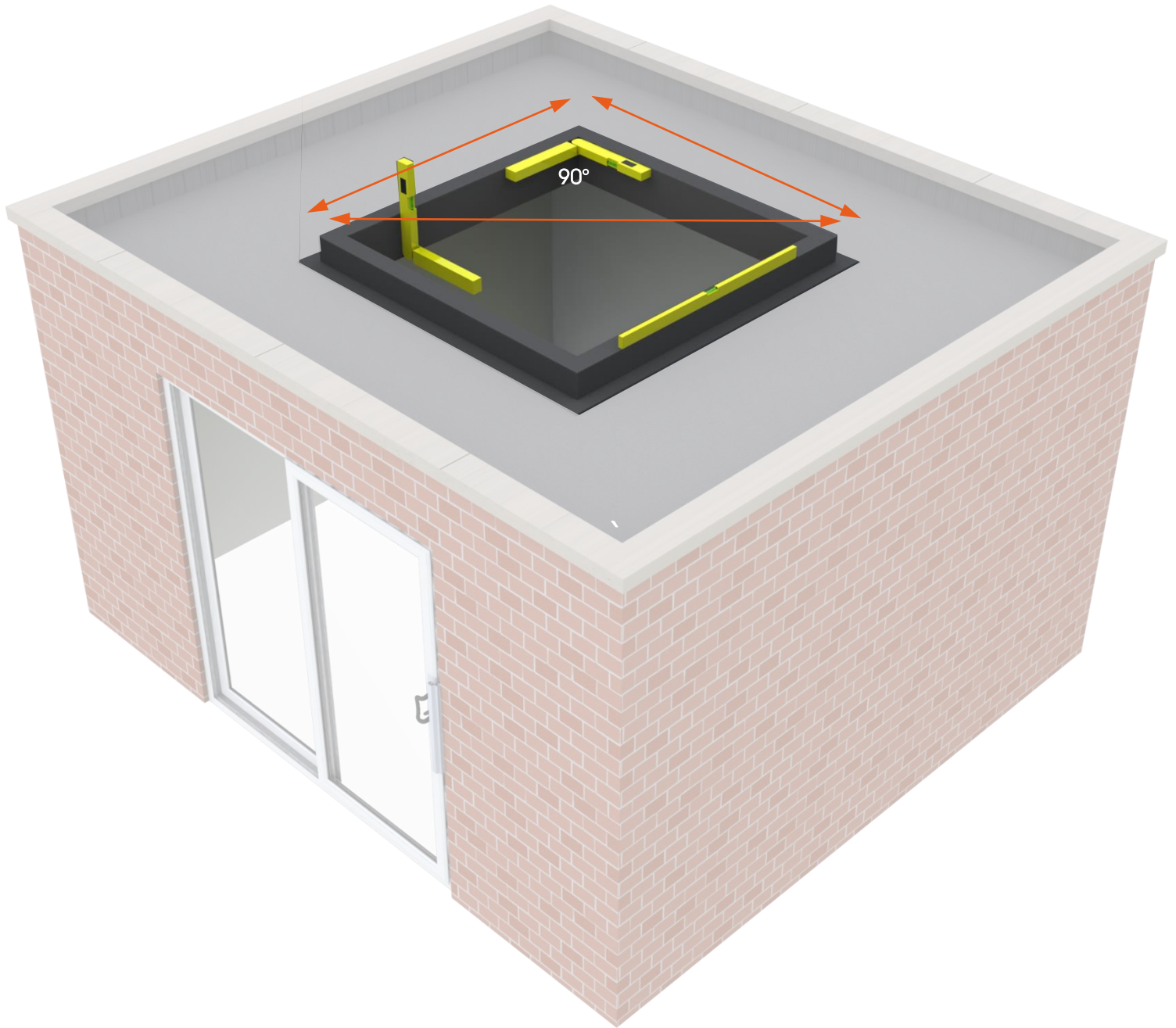
External Centre Cover Assembly
Section 2.12, pages 30-31



Roof Bar End Cap Assembly
Section 2.13, pages 32-33

2.1 - Preparation

Before Elevate Squared is installed, ensure the framework is fully assessed and all roof components are available. All relevant sizes are shown on the paperwork provided.



Check Bill of Materials

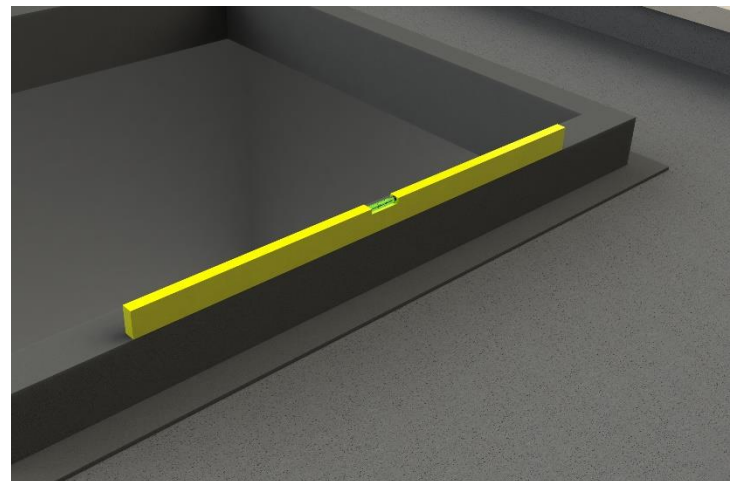
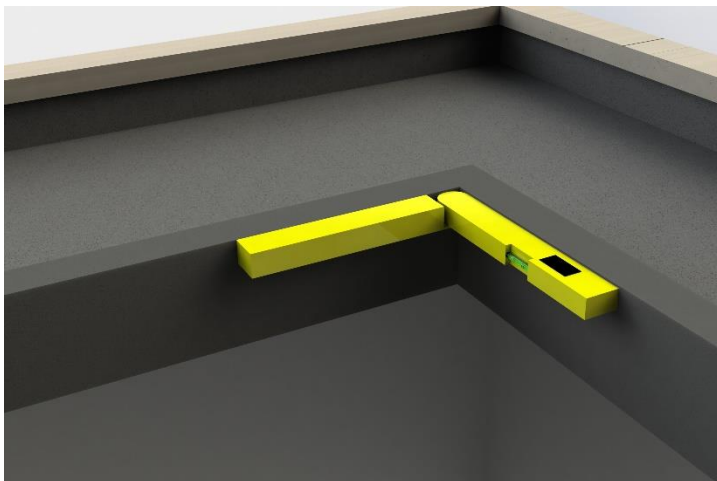
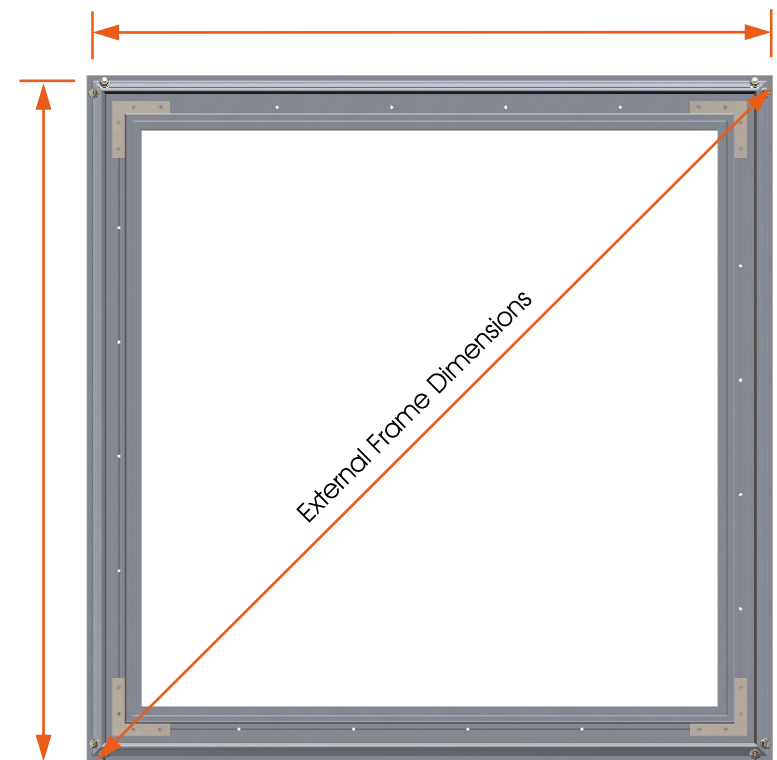
Use the paperwork that came with your Elevate Squared kit to make sure you have received all the components that are listed before you start.

Measure Length, Width and Diagonals of Frame

Measure the roof area you will be working on and check that the frame has been installed square and is the correct size. The external frame dimensions will be provided within the paperwork.

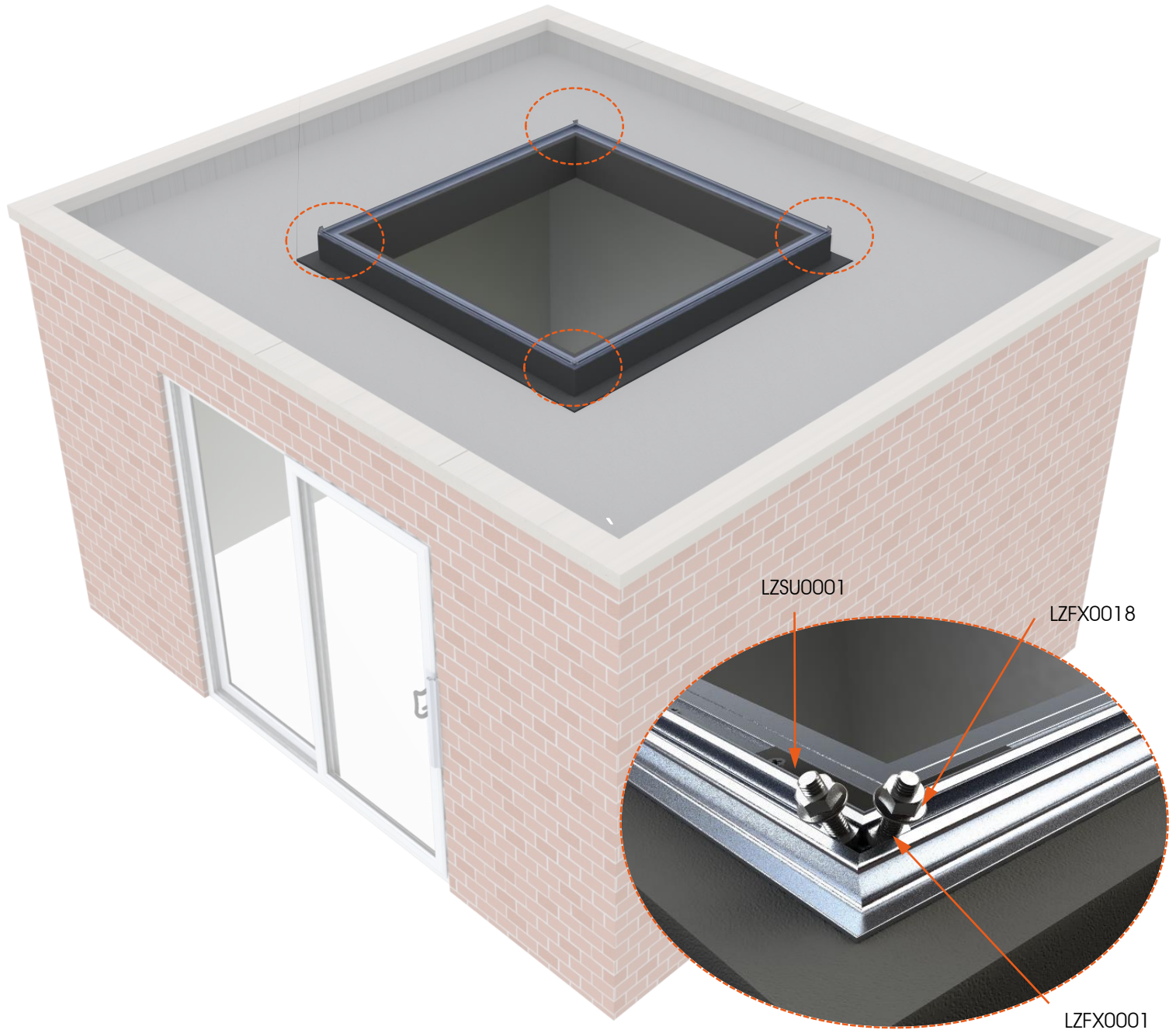
Check Level

Use a spirit level and level up if necessary before the Wall Rails are fitted.

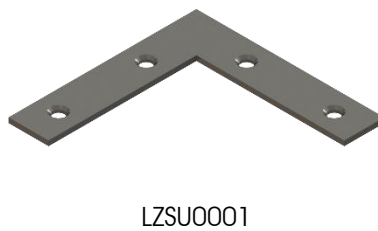
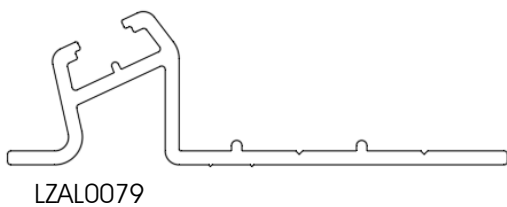


2.2 - Wall Rail Assembly

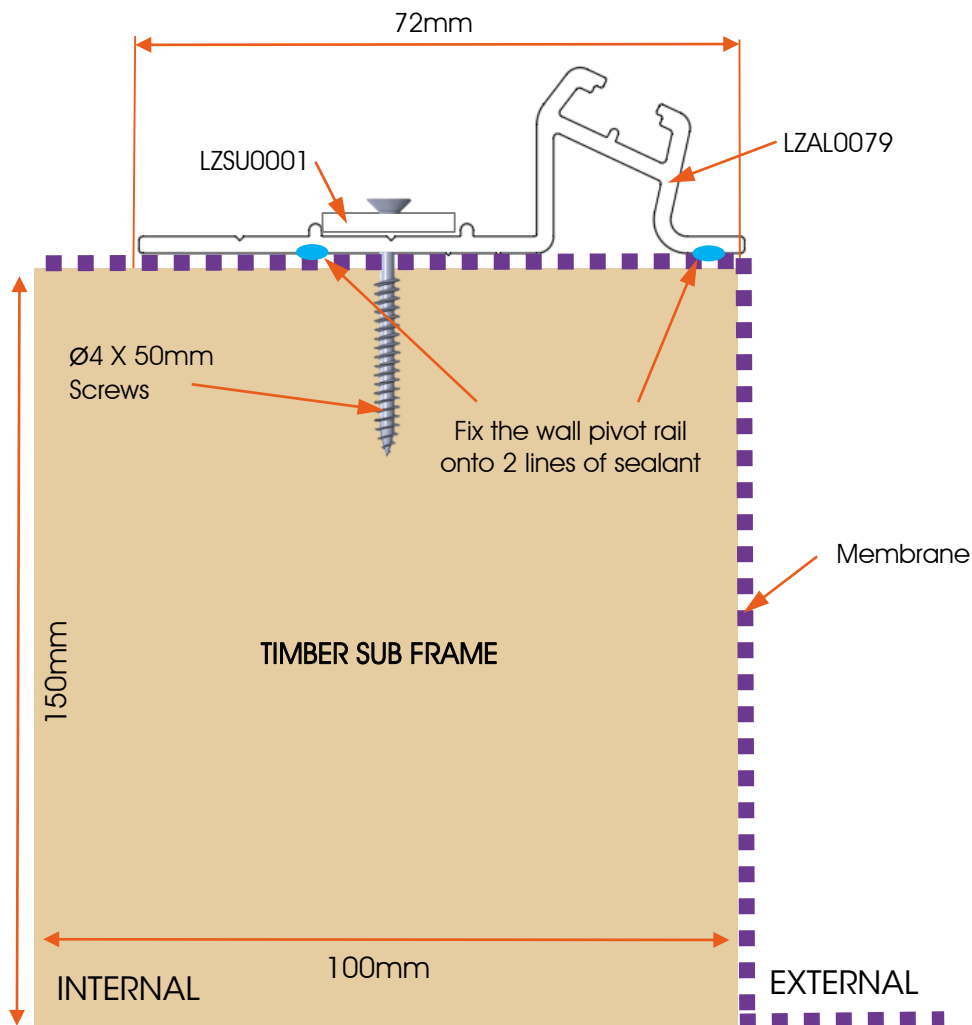
Ensure all fixings are located in the Wall Rail prior to fixing to the sub-frame. Once the Wall Rail is fixed they cannot be inserted.



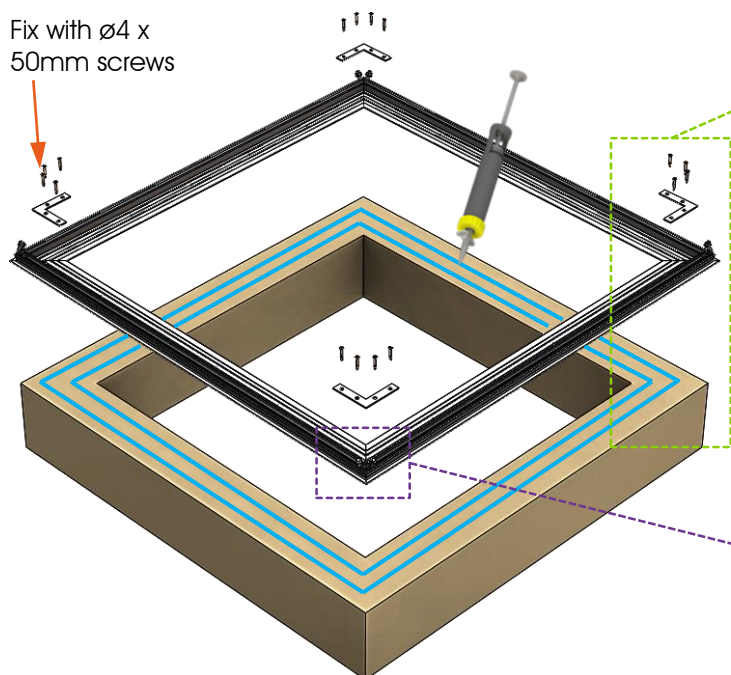
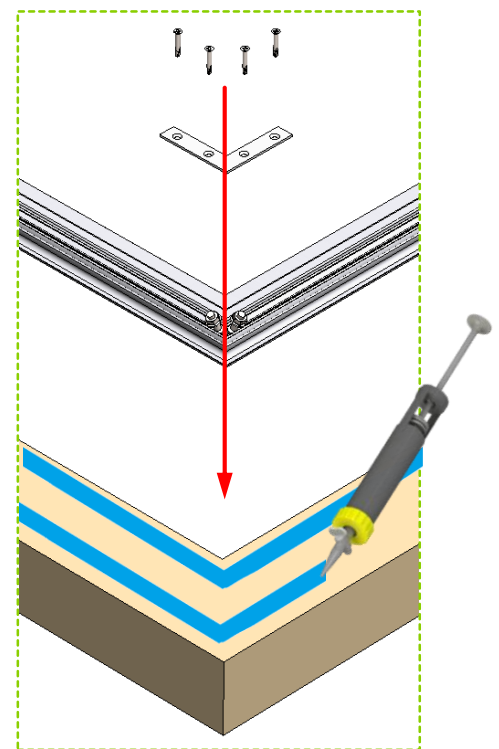
Related Components:



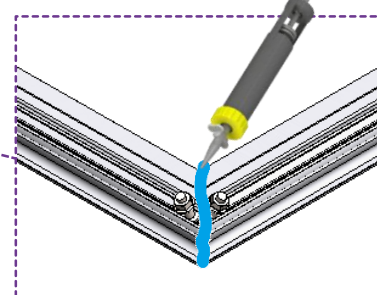
The timber sub-frame must be dressed with the roof membrane before Elevate Squared is installed. Run two lines of sealant around the perimeter, and apply a line of sealant to all mitre cuts. Bed the wall rail into the sealant. Align the Wall Rail with the external face of the timber sub-frame. The Wall Rail should be secured with $\varnothing 4 \times 50\text{mm}$ fixings at a minimum of 500mm centres (150mm from corners), with a 90° Horizontal Joining Plate fitted to every corner.



Drill holes in Wall Rail for 90° Horizontal Joining Plate. Use this as a template for hole position. Apply silicone to sub frame and fix Wall Rail with $\varnothing 4 \times 50\text{mm}$ screws.

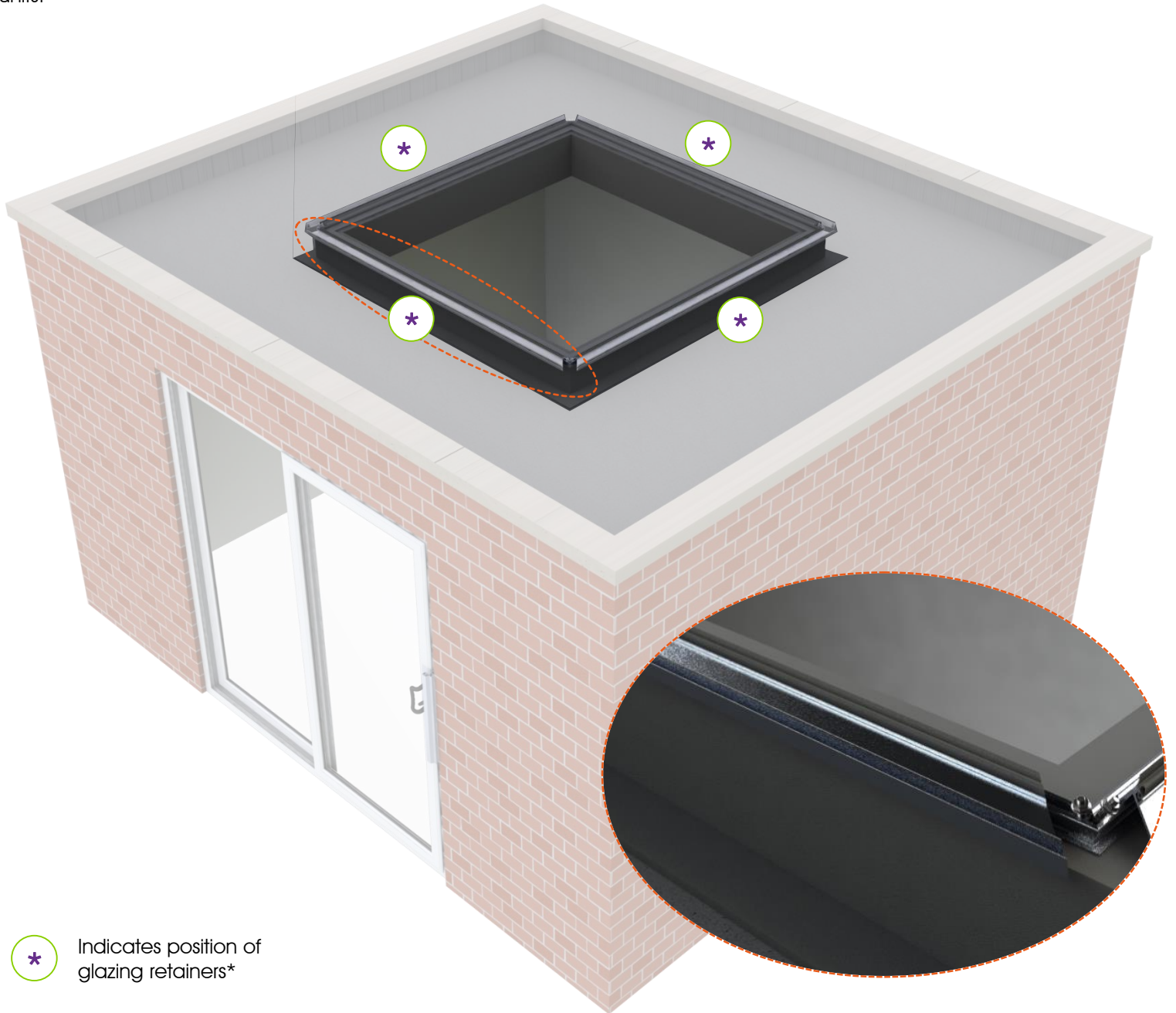


Apply silicone to all mitre corners



2.3 - Glazing Retainer and Cloaking Foam Assembly

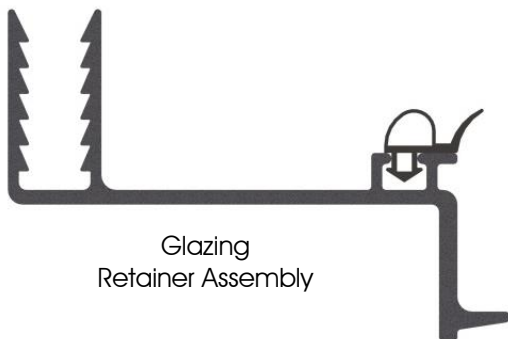
Ensure the Glazing Retainer Assembly are installed prior to fitting the roof bars. Glazing Retainers sit at the bottom of all glazed units.



* Indicates position of glazing retainers*

** See paperwork for glazing retainer positions*

Related Components:

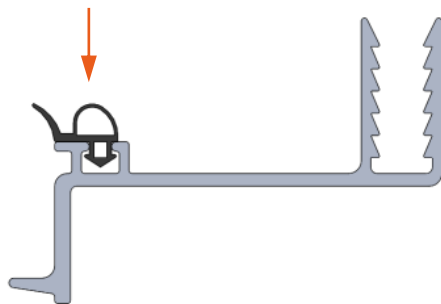


Glazing Retainer Assembly



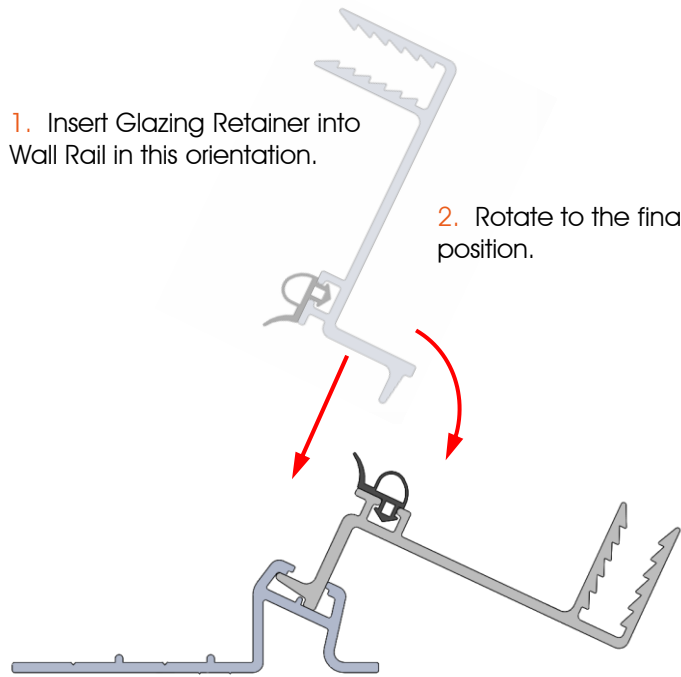
LZSU0100

Ensure Glazing Retainer Bubble Gasket (LZSU0065) is fitted in the correct orientation on all Glazing Retainers (LZAL0046A).



1. Insert Glazing Retainer into Wall Rail in this orientation.

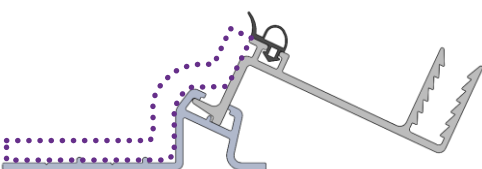
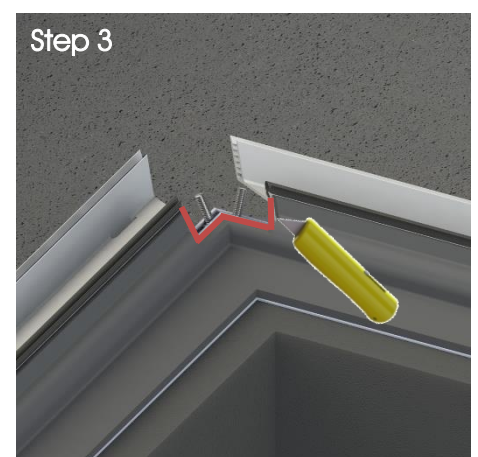
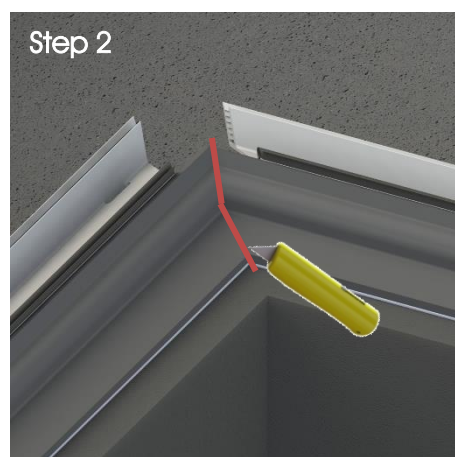
2. Rotate to the final position.



100mm Wall Rail Cloaking Foam (LZSU0100)

The Wall Rail Cloaking Foam adds extra insulation, minimises condensation on glass and improves overall aesthetics. The foam will be supplied in rolls and requires cutting to length to fit the Wall Rails.

Look for a roll/rolls of adhesive backed foam 6mm x 100mm. Remove backing tape and apply to the full length of the Wall Rail.

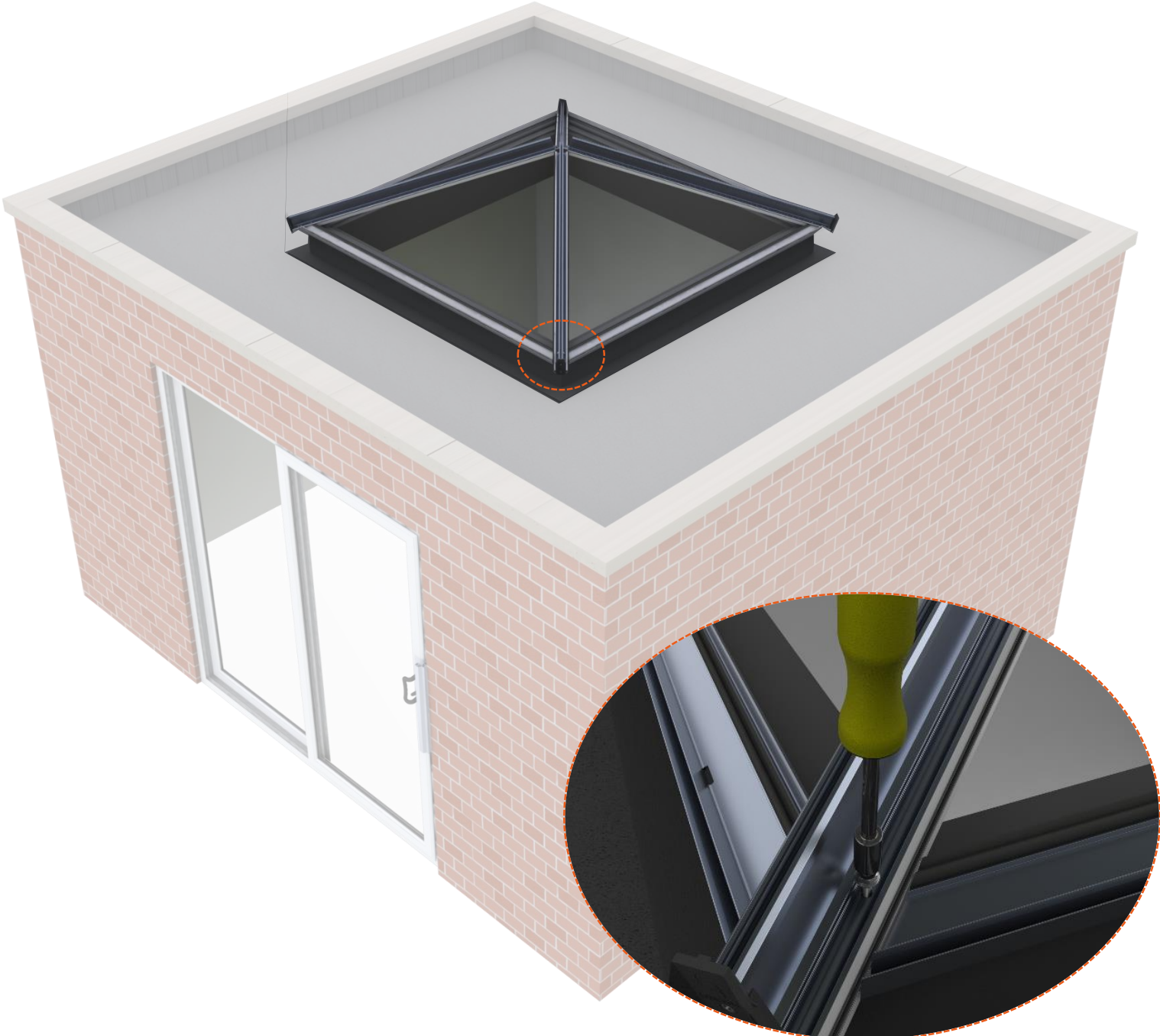


Step 2
Cut mitre all corners. Remove and discard excess foam.

Step 3
Notch foam for all hip bars using the glazing retainer as a guide. Apply firm pressure to the foam to ensure it is stuck securely.

Prepare all surfaces removing any dirt or grease. Remove backing from foam roll and apply along the length of all Wall Rails and Glazing Retainers, overlapping at the corners (see cross section above).

2.4 - Hip Bar Assembly



Related Components:



Hip Bar Assembly



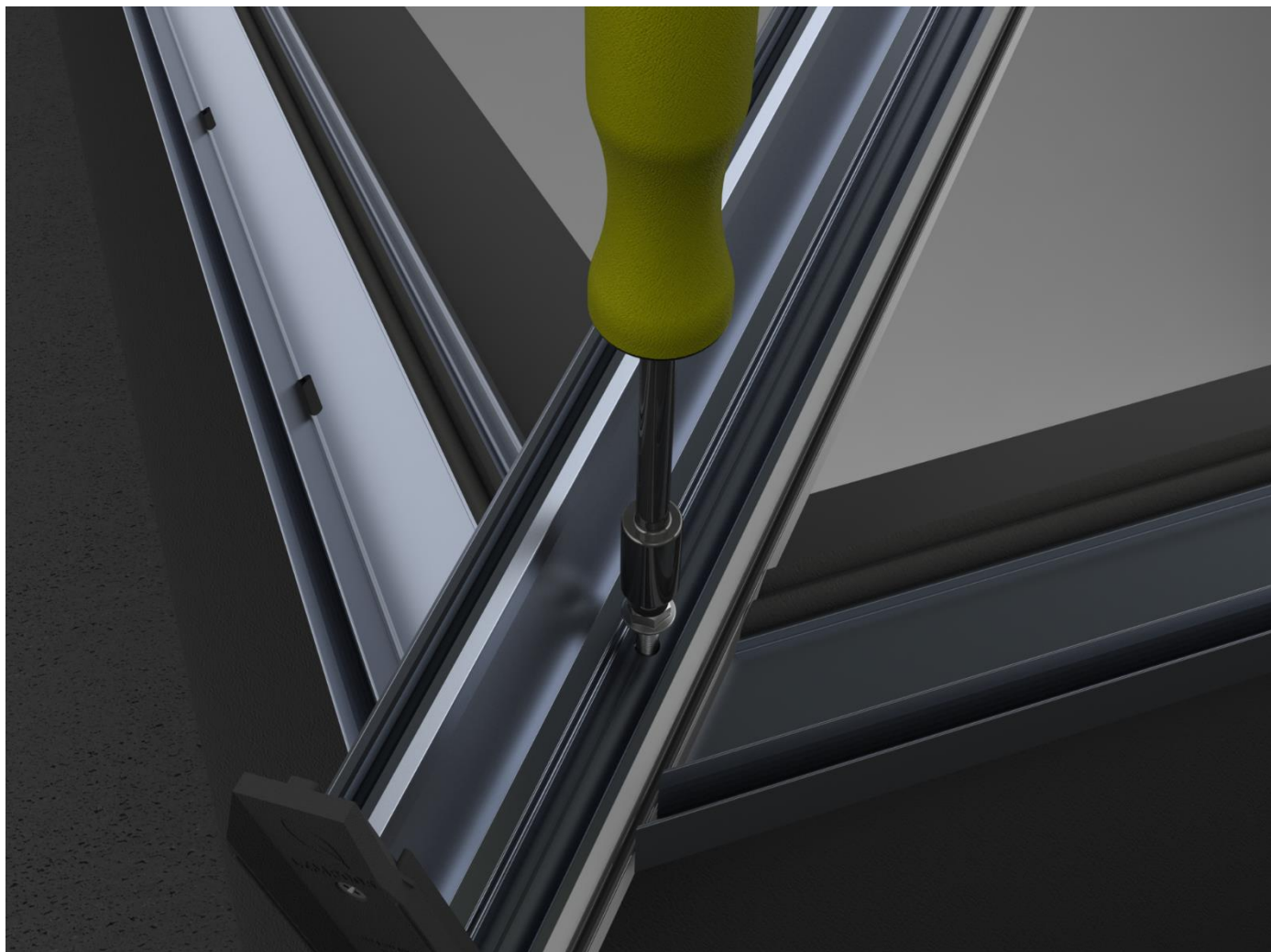
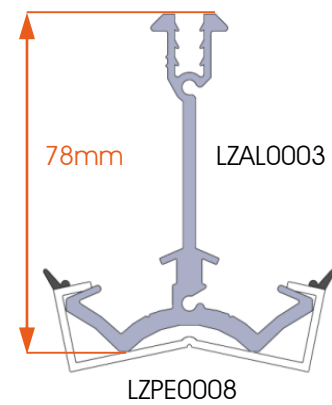
LZFX0001



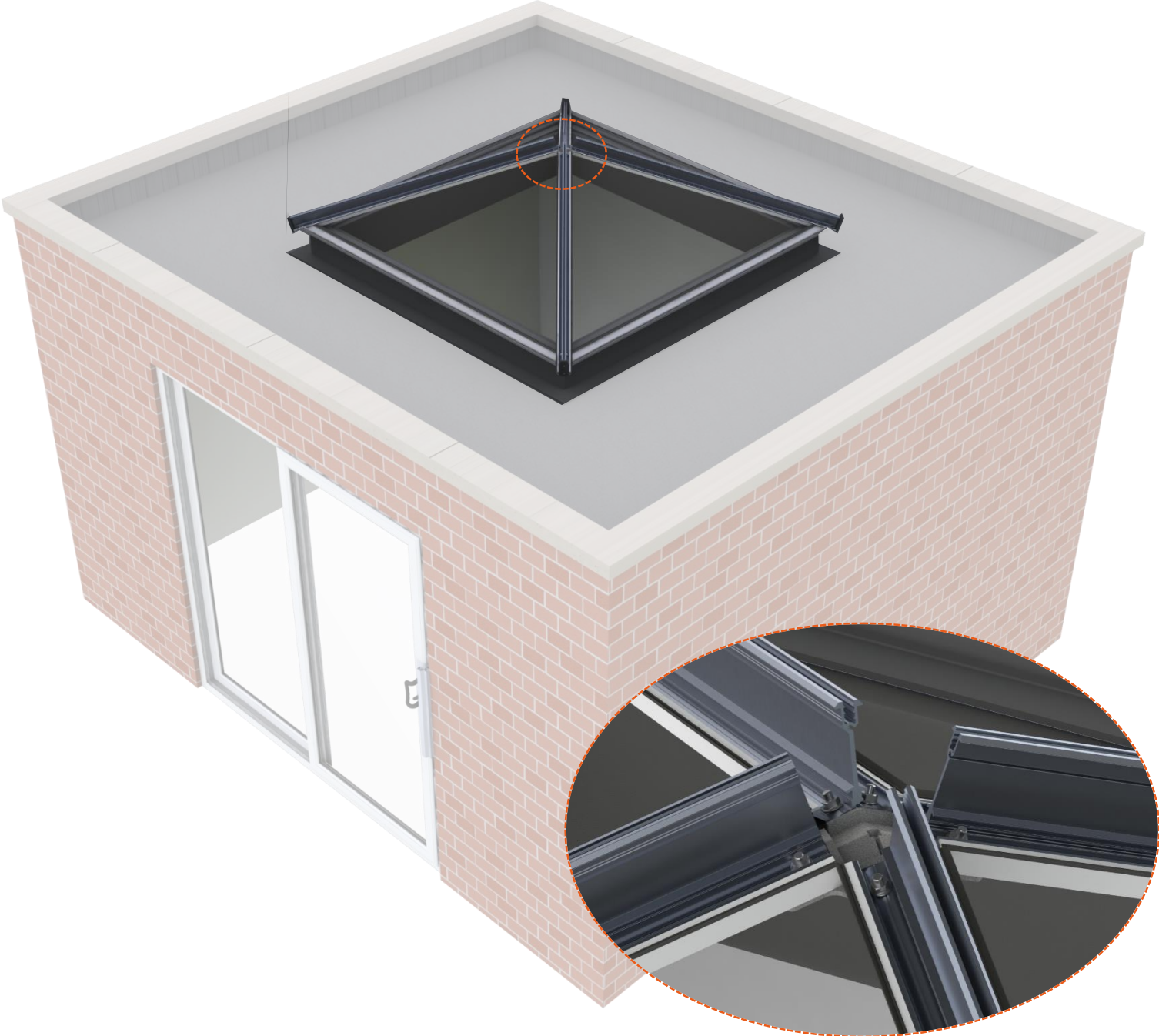
LZFX0018

Loosely connect the bottom end of the Hip Bar Assembly to the Wall Rail, securing it in place with 2 x M6 Flange Nuts. They will be tightened later on.

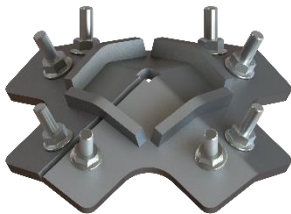
** Hand tighten - do not use an impact driver*



2.5 - Centre Boss Assembly

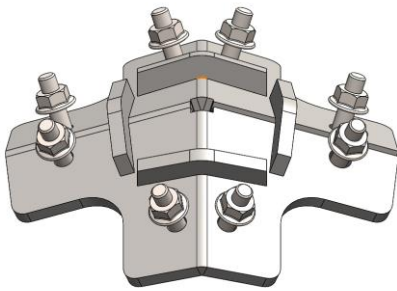


Related Components:



Centre Boss
Assembly

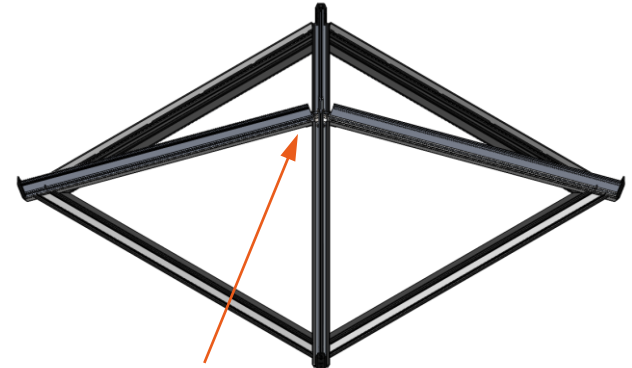
1.



Check correct number of fixings have been supplied with the Centre Boss Assembly, there should be 8x 6mm Socket Cap Head Screws, and 8x 6mm Flange Nuts. Remove fixings and place Centre Boss underneath all four Hip Bars and align hole positions.

2.

Lift the Centre Boss while also supporting it, while another person inserts the Socket Cap Head Screws upwards through the holes while loosely fitting the Flange Nuts. This connects the Centre Boss to all four Hip Bars.

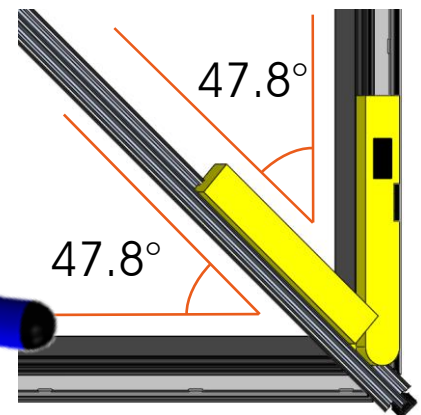
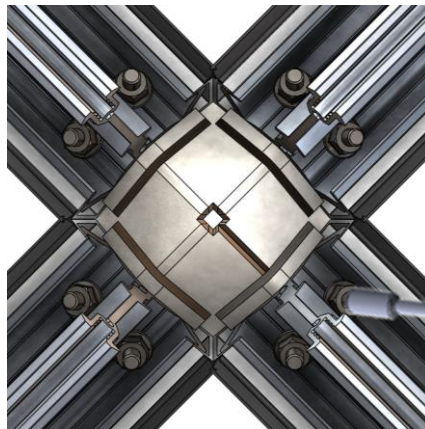


LIFT AND SUPPORT CENTRE BOSS

3.

While the other person is lifting the Centre Boss as high as possible, use an Angle Finder to set one Hip Bar to 47.8°, then tighten fixings top and bottom.

Repeat this process with the other three Hip Bars.

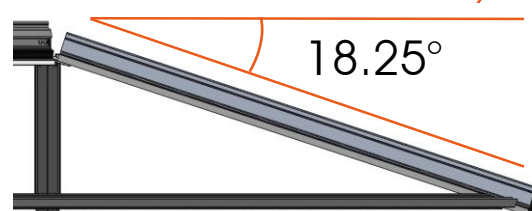
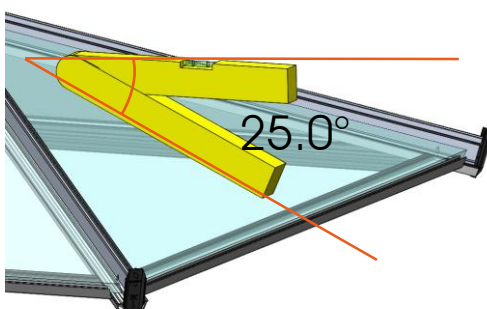
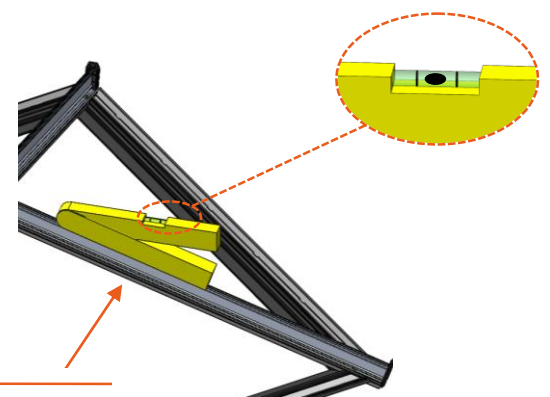


4.

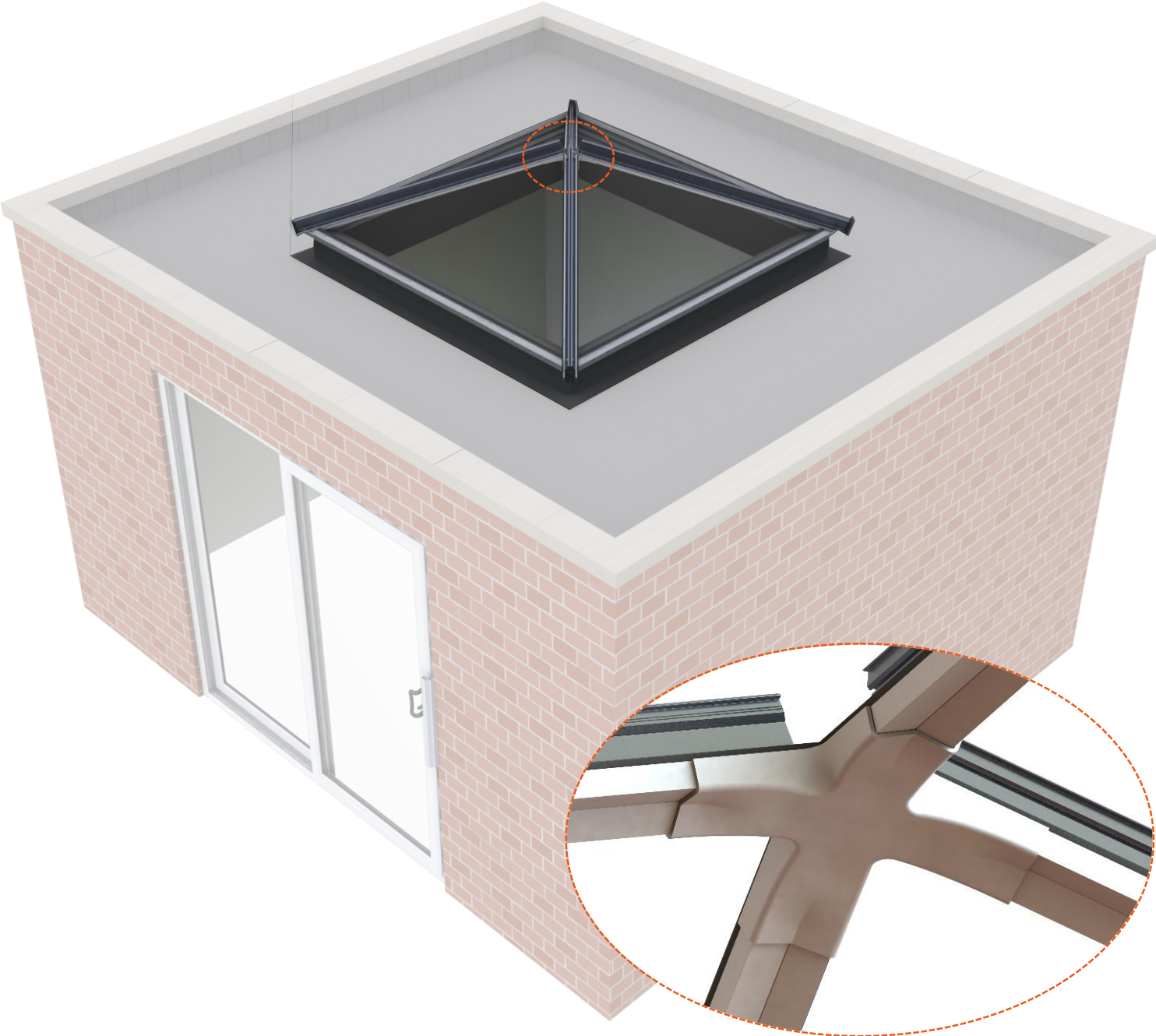
Once fully tightened, double check all angles. Each Hip Bar should measure 18.25°.

If all correct, the glazing material will sit at the correct angle of 25°, this will be checked later on.

If incorrect, adjust until correct angles are achieved. Do not fit glazing until correct.



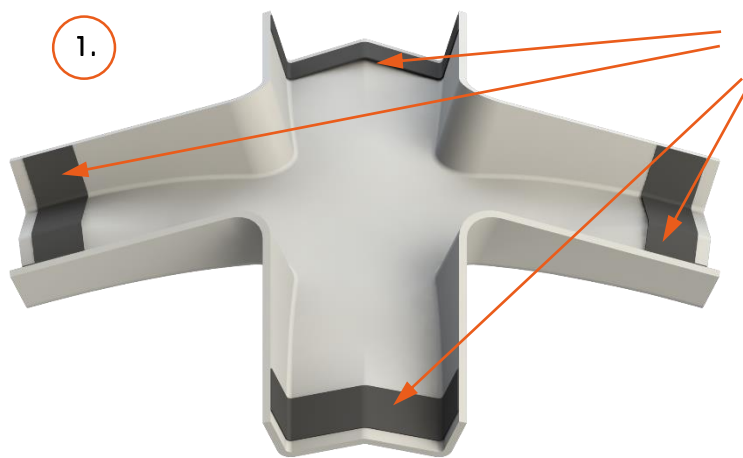
2.6 - Internal Centre Cover Assembly



Related Components:



LZMP0080

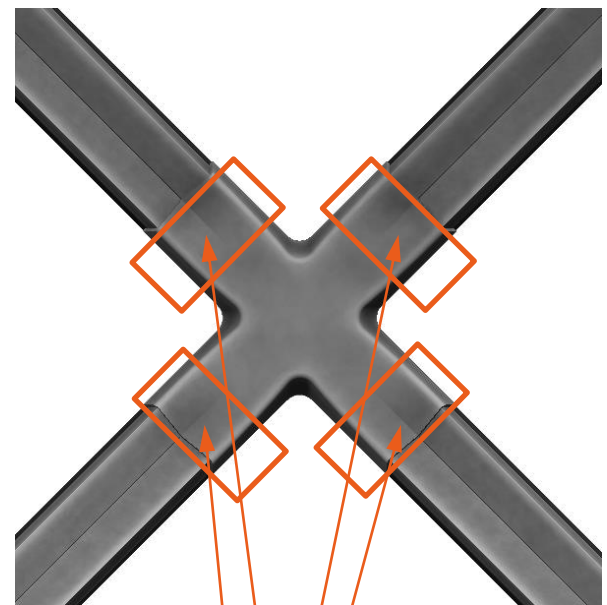


Peel off tape backing before applying to roof.*

** Ensure Square Internal Centre Covers are clean and dry before applying to roof*

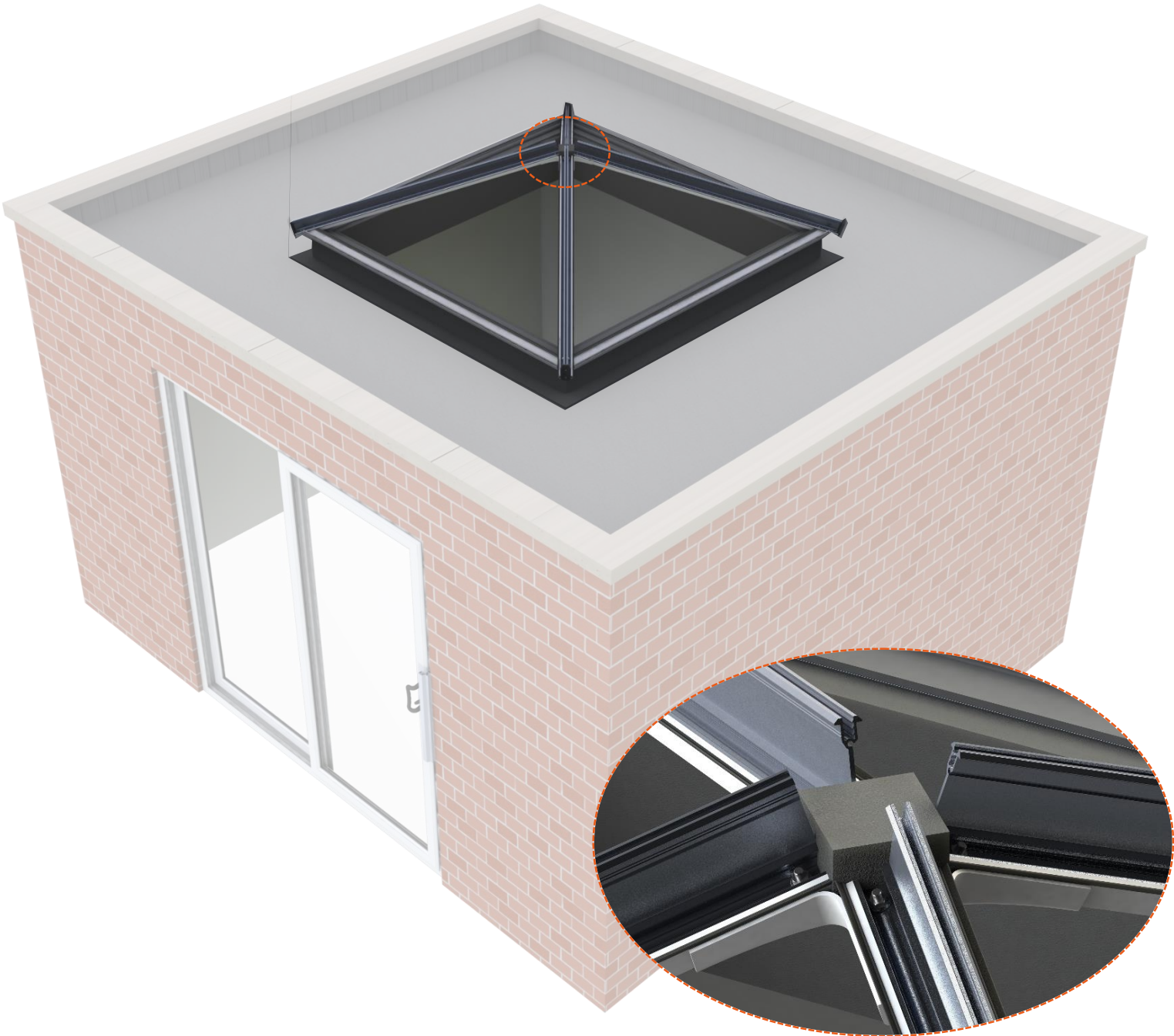


2. Align with all four Hip Bars, lift all sides whilst pushing down to ensure tape adheres properly. This may require two sets of hands.

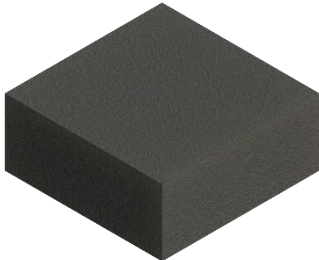


3. Apply firm pressure here.

2.7 - Centre Foam Assembly



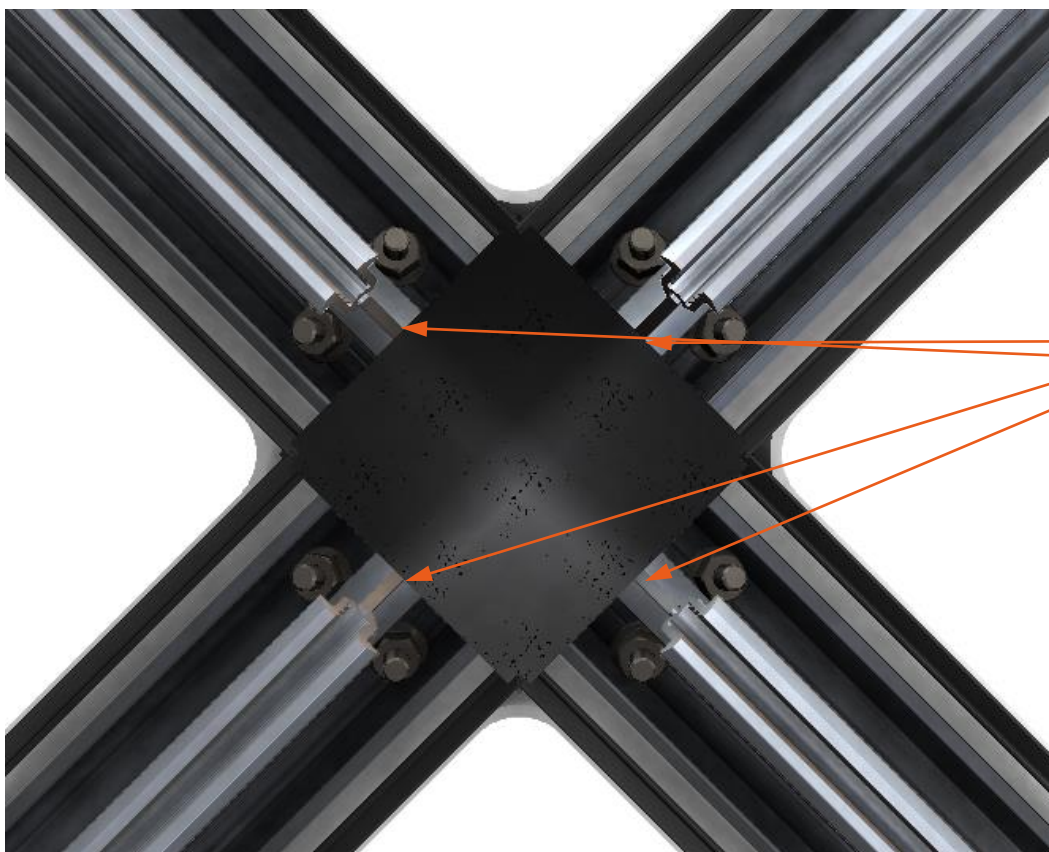
Related Components:



LZSU0103



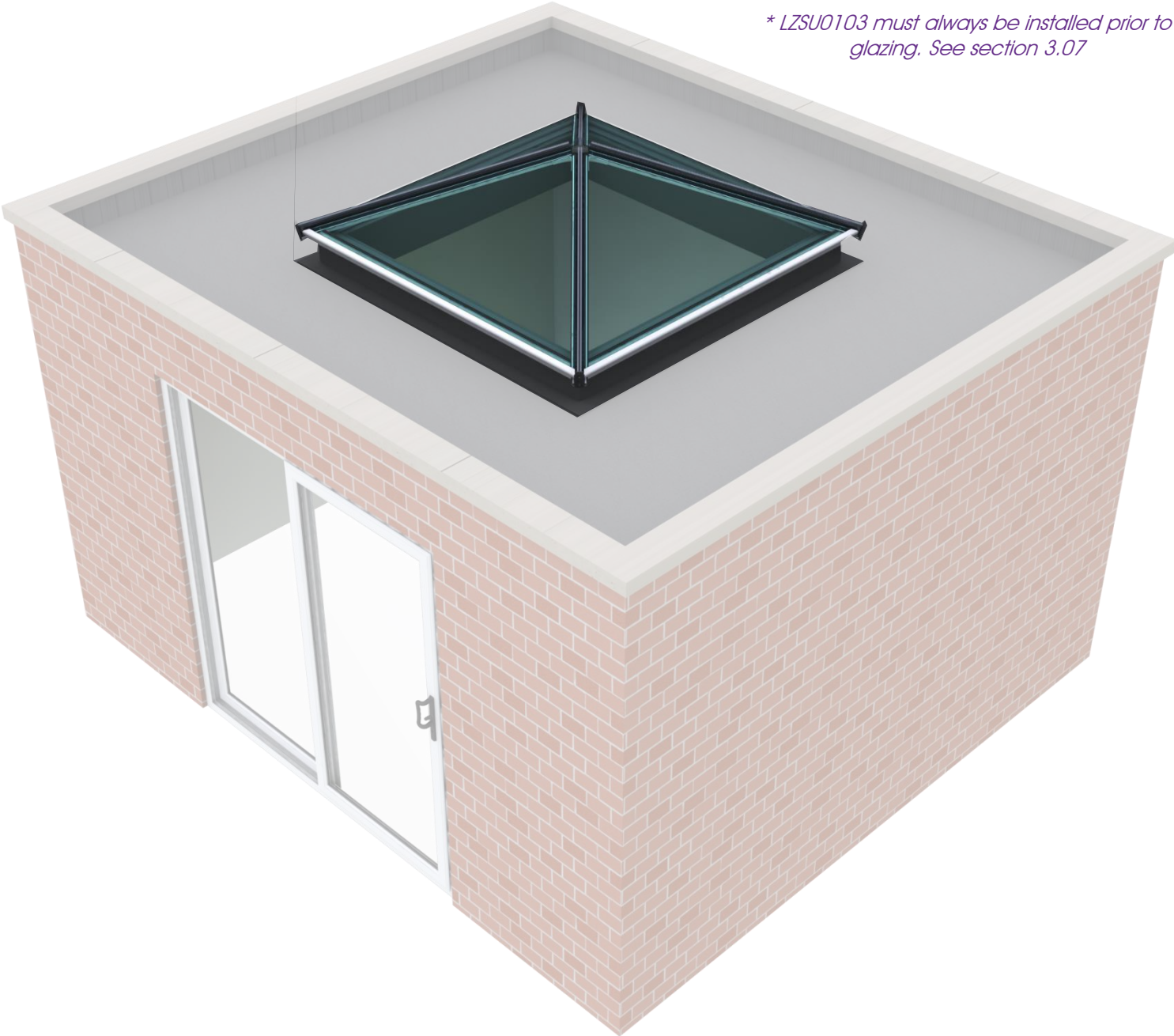
Align straight edges of the Centre Foam Bung to the Hip Bars and tuck into the gap in the centre of the roof.



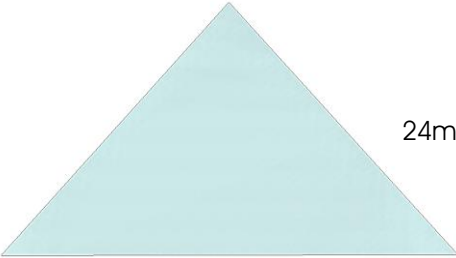
Push Centre Foam Bung down, ensuring the foam is tucked tightly next to all four Hip Bars and pressed down onto the Centre Boss.

2.8 - Glazing Assembly

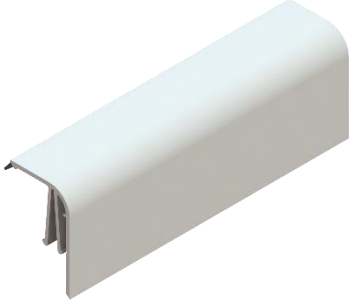
** LZSU0103 must always be installed prior to glazing. See section 3.07*



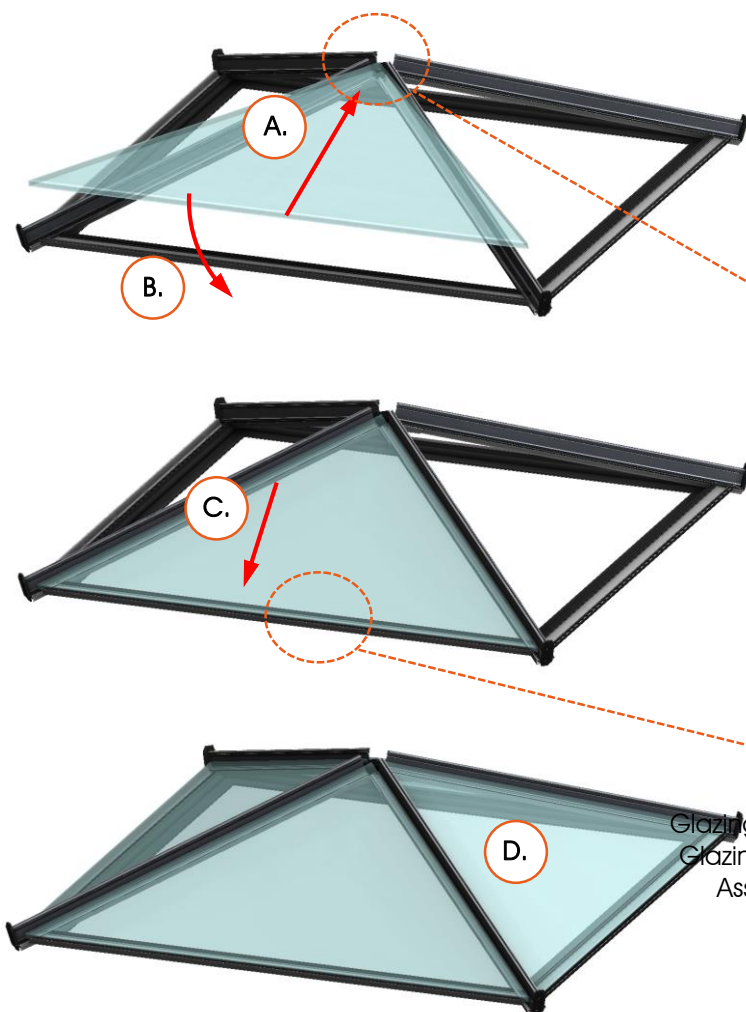
Related Components:



24mm Glazing



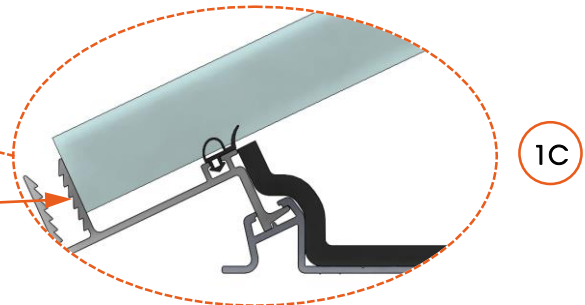
LZPE0028



- A. To install the glazing, push the top end of the glazing panel up to the centre of the roof, ensuring the glazing is placed above the Square Foam Bung (see illustration 1A). Align the glass so that it is centrally positioned between the Hip Bars.
- B. Lower the bottom end of the glazing panel to rest on the roof bars.
- C. Slide the glazing down until it is resting on the Glazing Retainer Assembly (see illustration 1C).



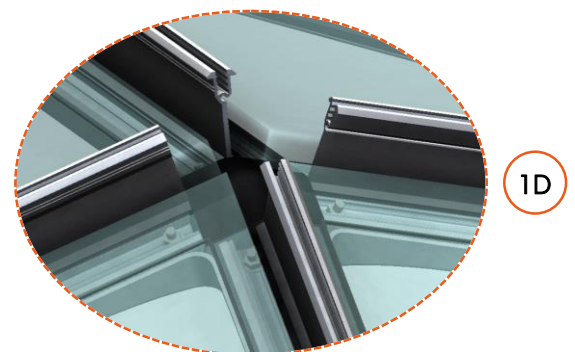
1A



1C

Glazing resting on Glazing Retainer Assembly.

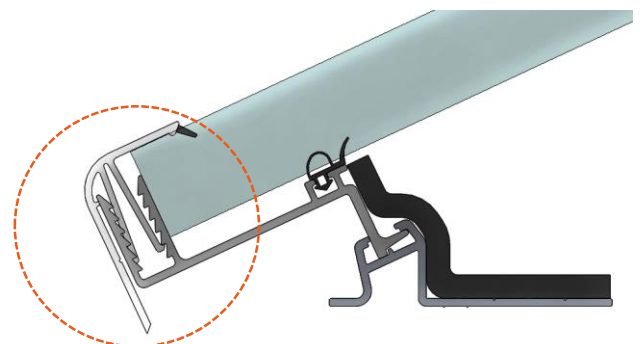
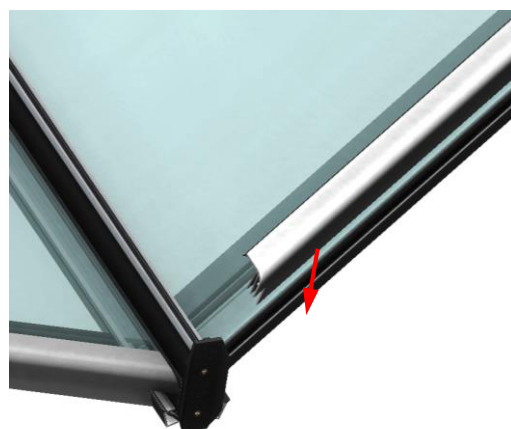
- D. Repeat process on all four sides. As it's a square roof, all four glazing units are the same. The Centre Foam Bung should now be compressed with all glazing units (see illustration 1D).



1D

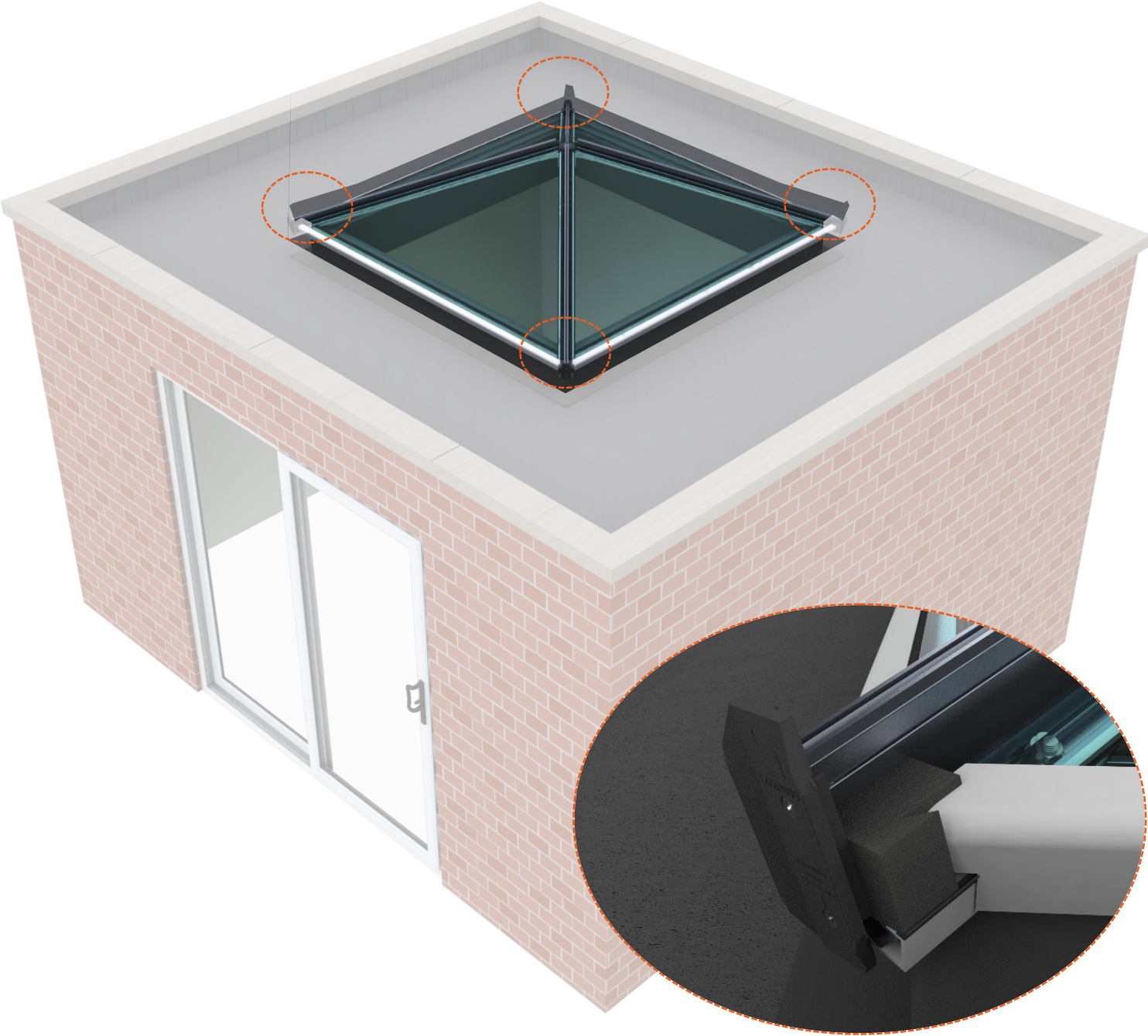
** Set an Angle Finder to 25° and place on each glazing panel to check for the correct elevation. If incorrect go back to page 17 and re-adjust until correct angles are achieved.*

Once the glazing is in position, the Glazing Retainer Trims should be inserted into the aluminium part of the Glazing Retainer Assembly.

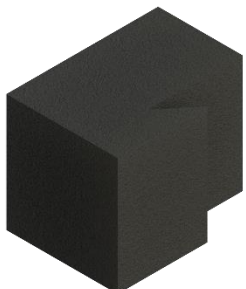


** Glazing Retainer Trims must be fitted before the Hip Bar Top Caps are installed*

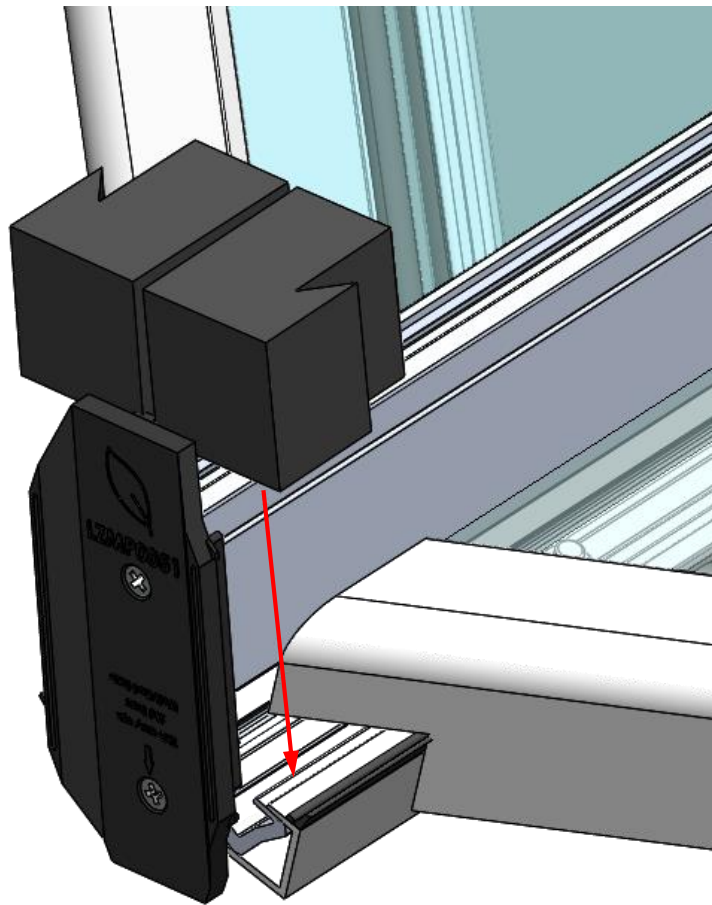
2.9 - Hip Bar Foam Assembly



Related Components



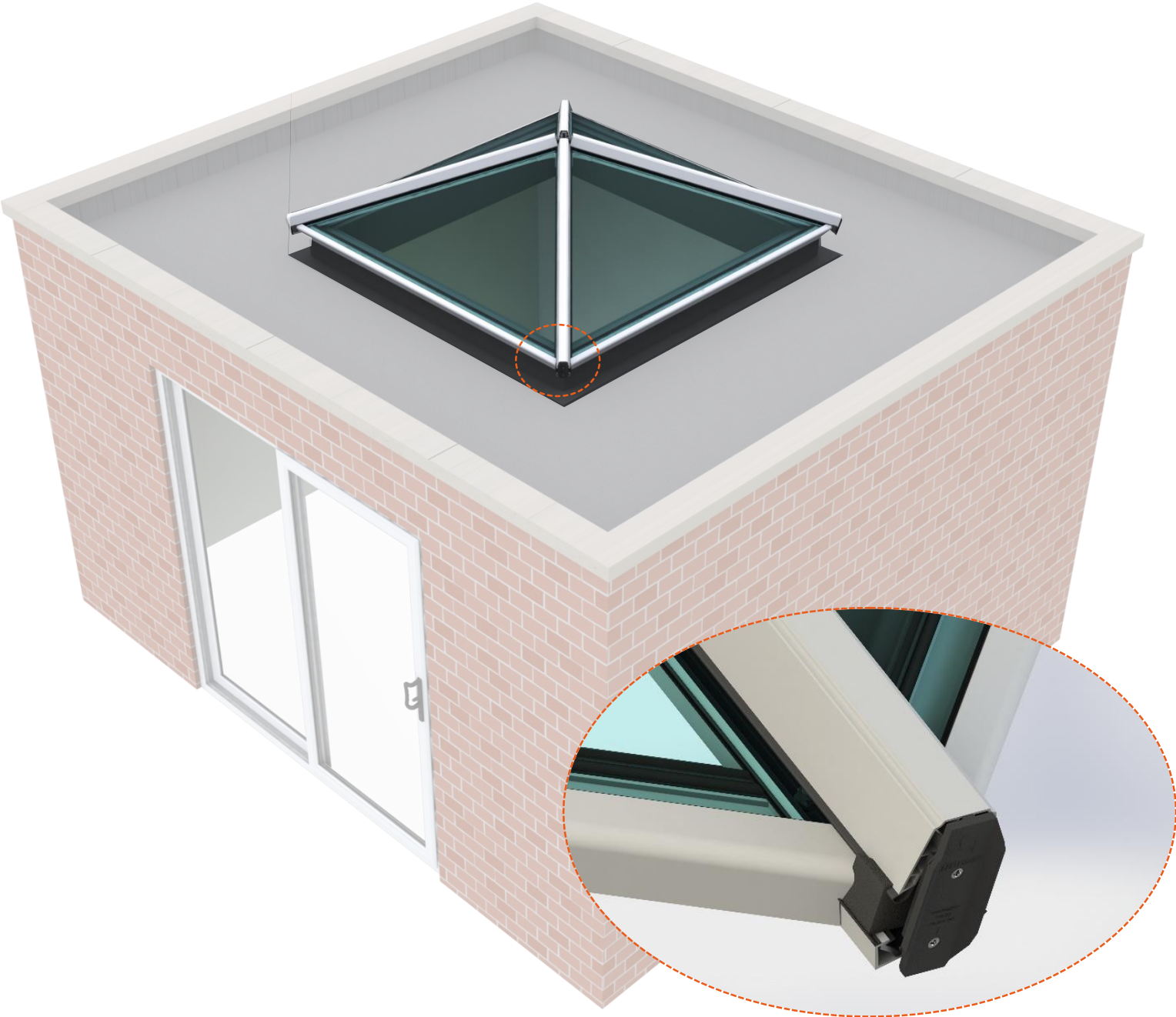
LZSU0099



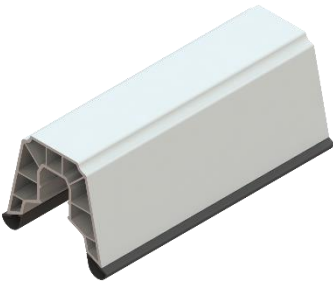
Fit to all Hip Bars, ensuring that there are two Hip Bar Foam Bungs per bar.



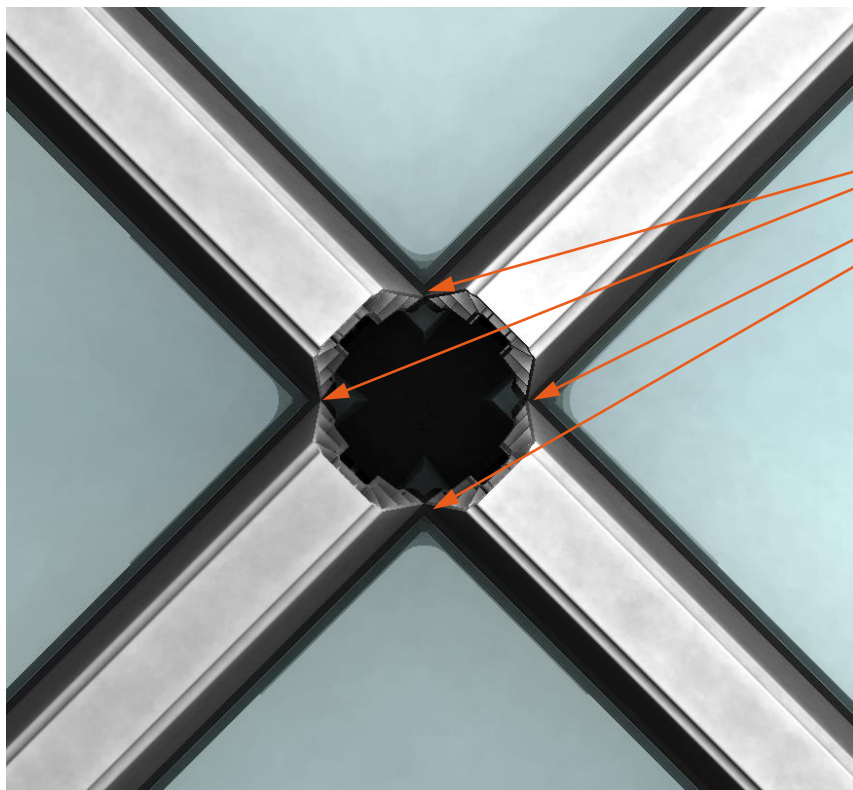
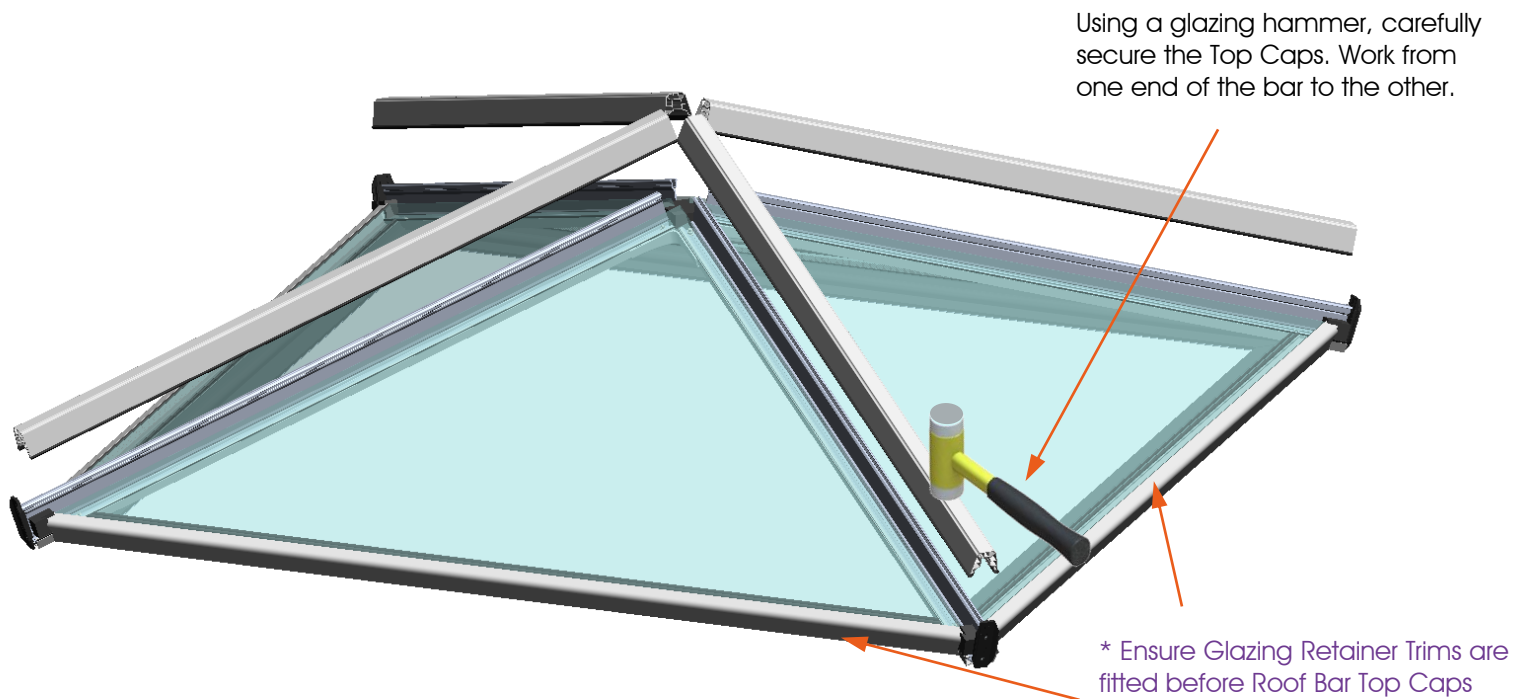
2.10 - Top Cap Assembly



Related Components:



LZPE0042



The Top Caps are 16.5mm longer than the Hip Bars. The Top Caps should always touch (or very close to touching) in the corners (as pointed to on the left). Also check that the Top Caps are all square to each other.

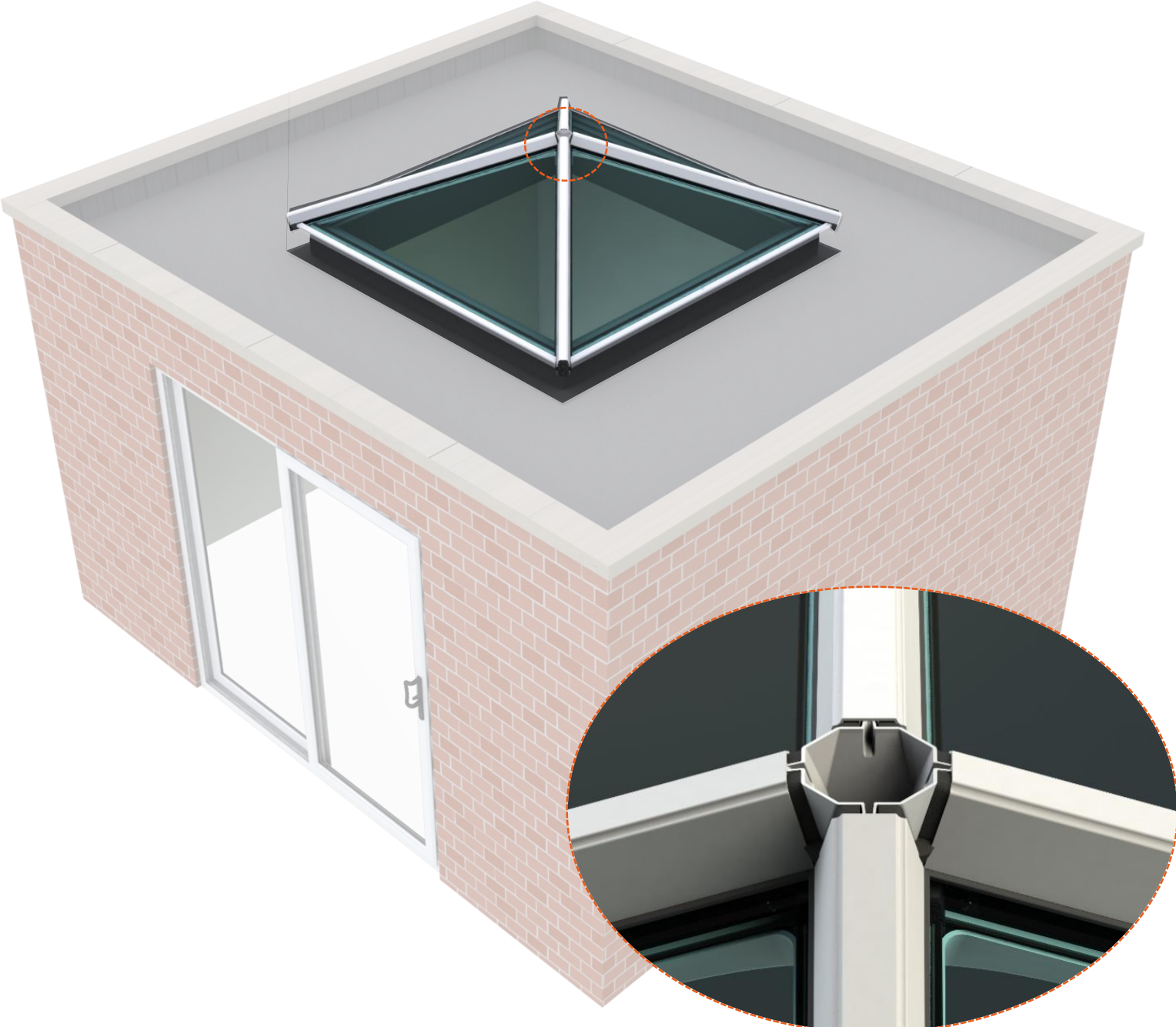
If there is a gap, check the length of the Top Caps (see paperwork). If the Top Cap lengths are correct, remove the glazing and re-tighten the Hip Bars until the gap reduces.

This is an important step as if there is a large gap, the Square Weather Dam will not fit properly and the roof will leak.

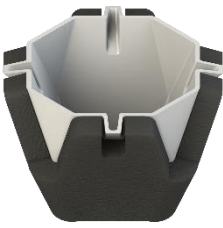


Top Caps should be in contact with the End Cap Mounting Brackets at the bottom of each roof bar.

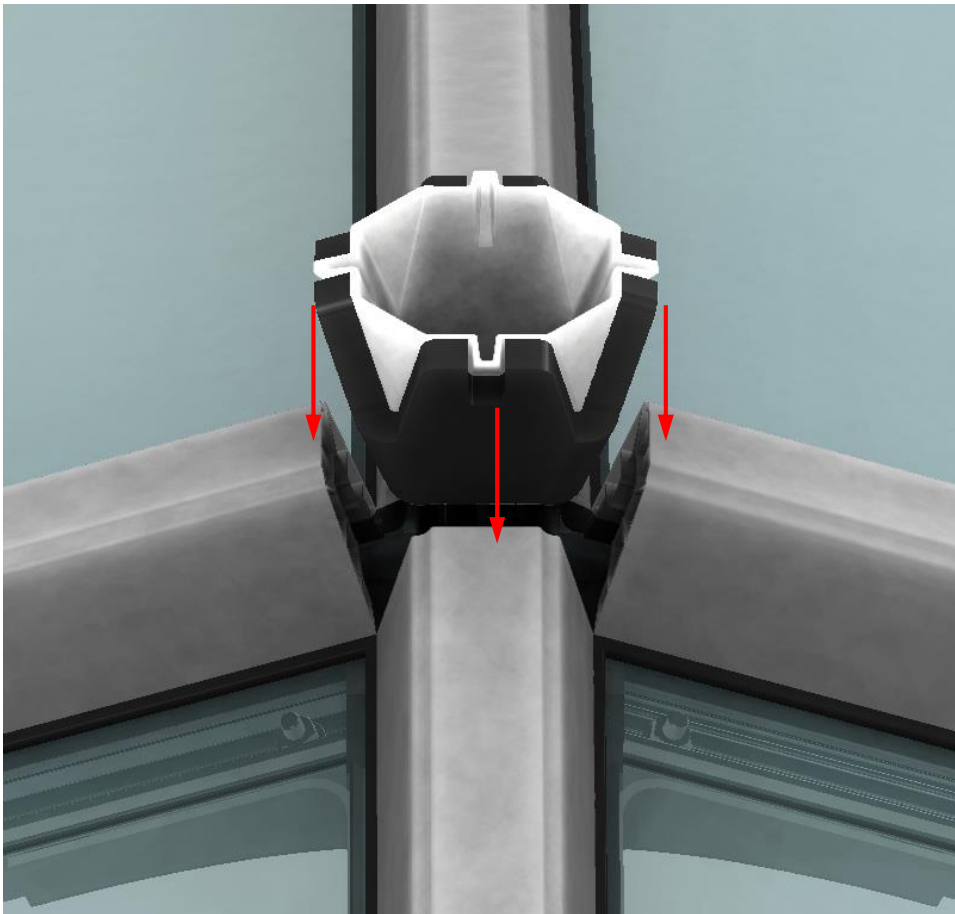
2.11 - Square Weather Dam Assembly



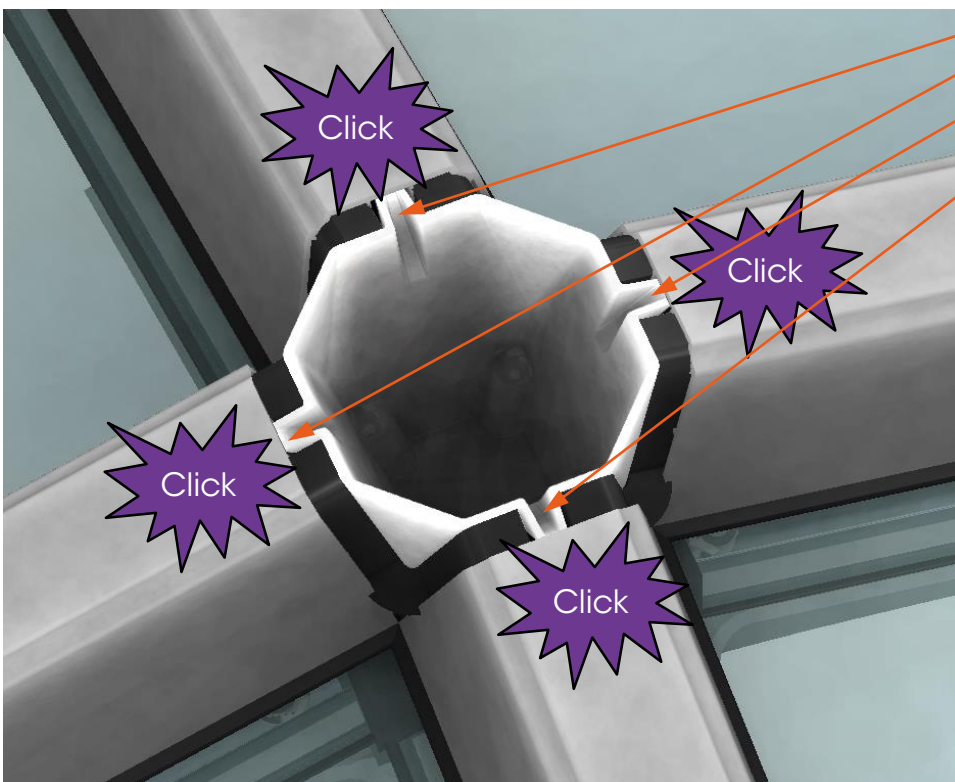
Related Components:



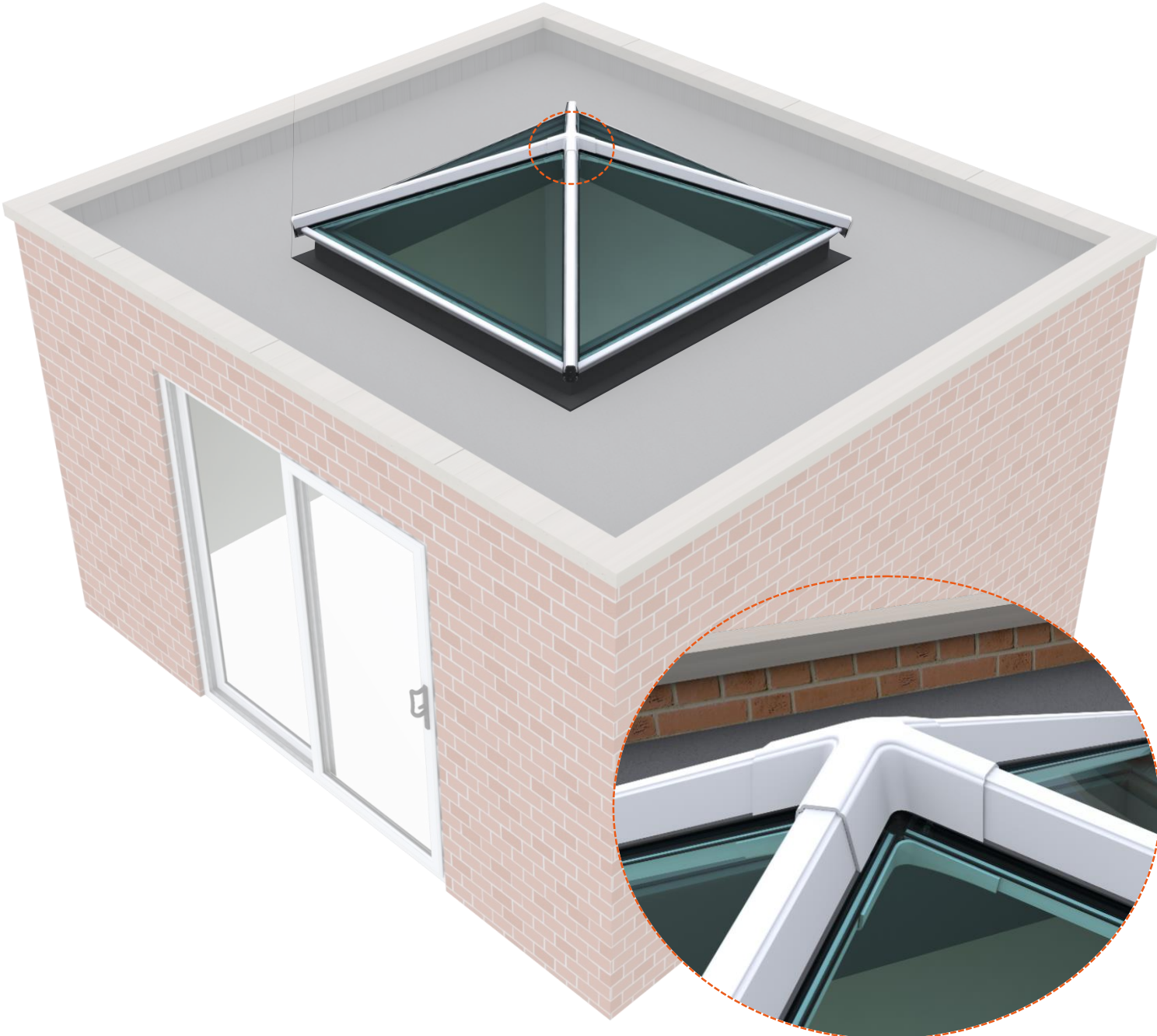
LZSU0102



Push down and clip into all four Top Caps.



2.12 - External Centre Cover Assembly

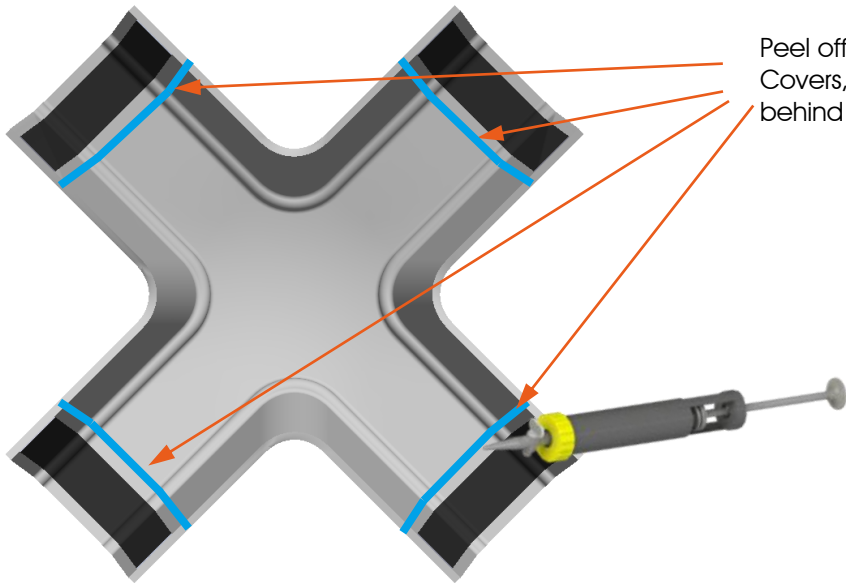


Related Components:



LZMP0079

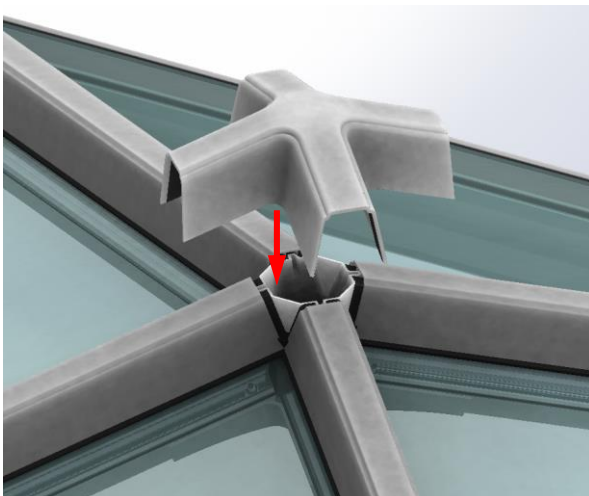
1.



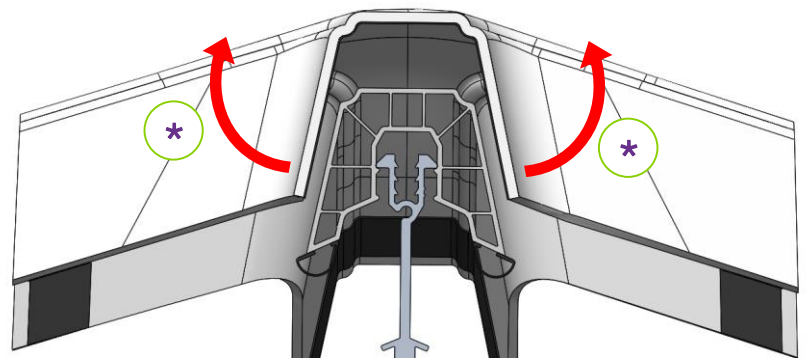
Peel off the tape backing from the External Centre Covers, add a line of low modulus neutral cure silicone behind the tape on all four ends.*

** Ensure External Centre Covers and Roof Bar Top Caps are clean and dry before fitting to roof.**

2.

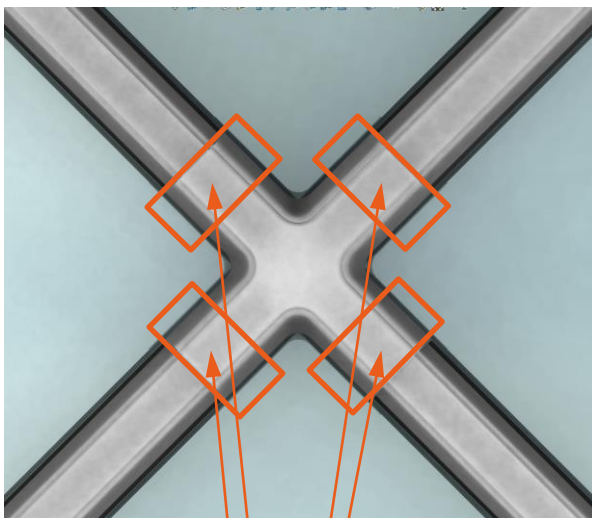


To fit the External Centre Covers align with the Hip Bars. Pull the sides of the covers out as shown to allow the top face to make contact with the Roof Bar Top Caps, and then stick down. Repeat this process with all four Hip Bars. This may require two sets of hands.



** Pull out the sides of the cover to allow the top face to make contact when fitting.*

3.



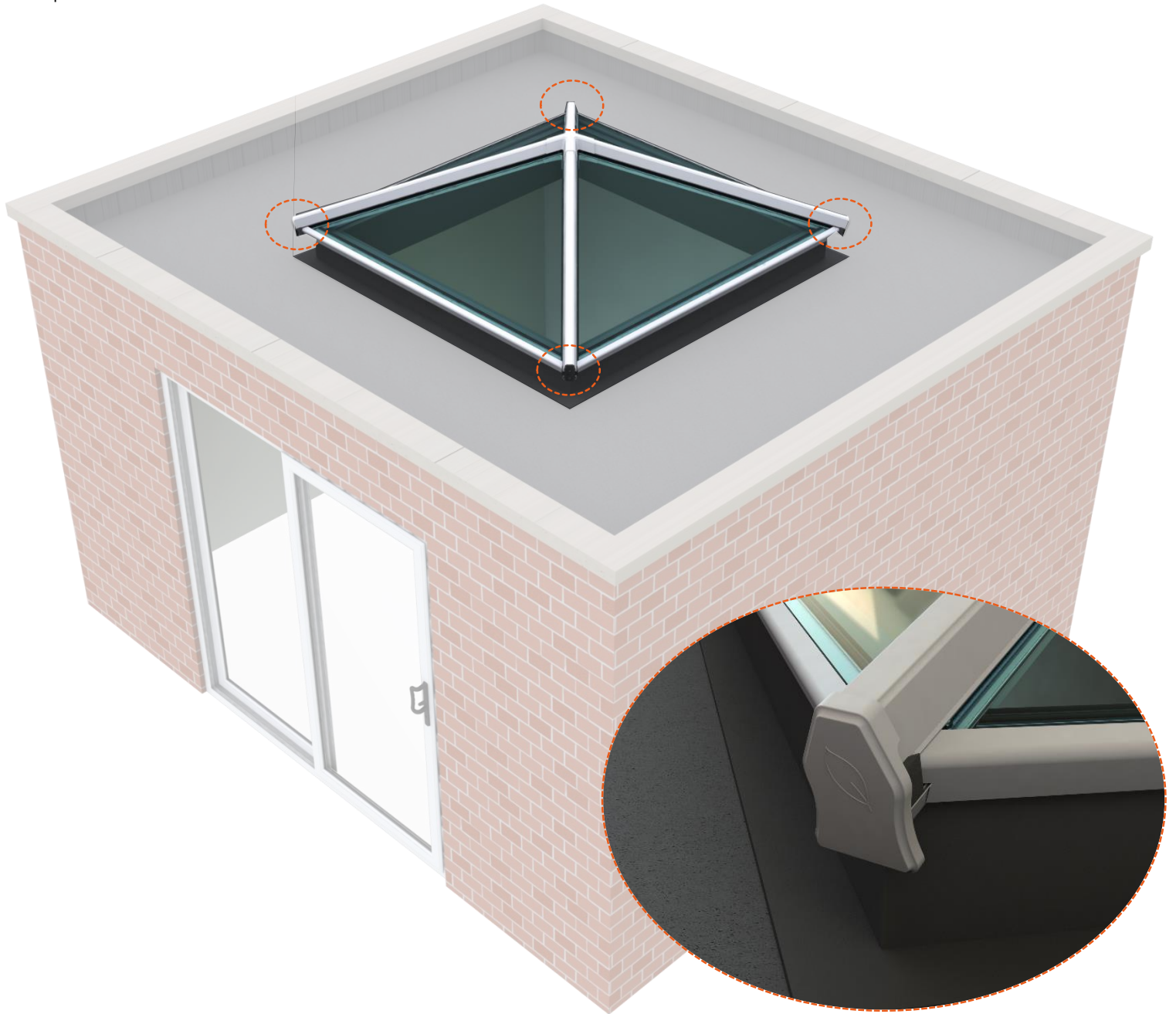
Firmly apply pressure in the areas shown, ensuring that all sides are properly adhered.

Wipe away any leaked silicone should any appear.

Apply firm pressure to adhere the tape.

2.13 - Roof Bar End Cap Assembly

The Roof Bar End Caps are installed to the bottom of each bar. Ensure the End Cap Mounting Brackets are present as the caps slide onto them.

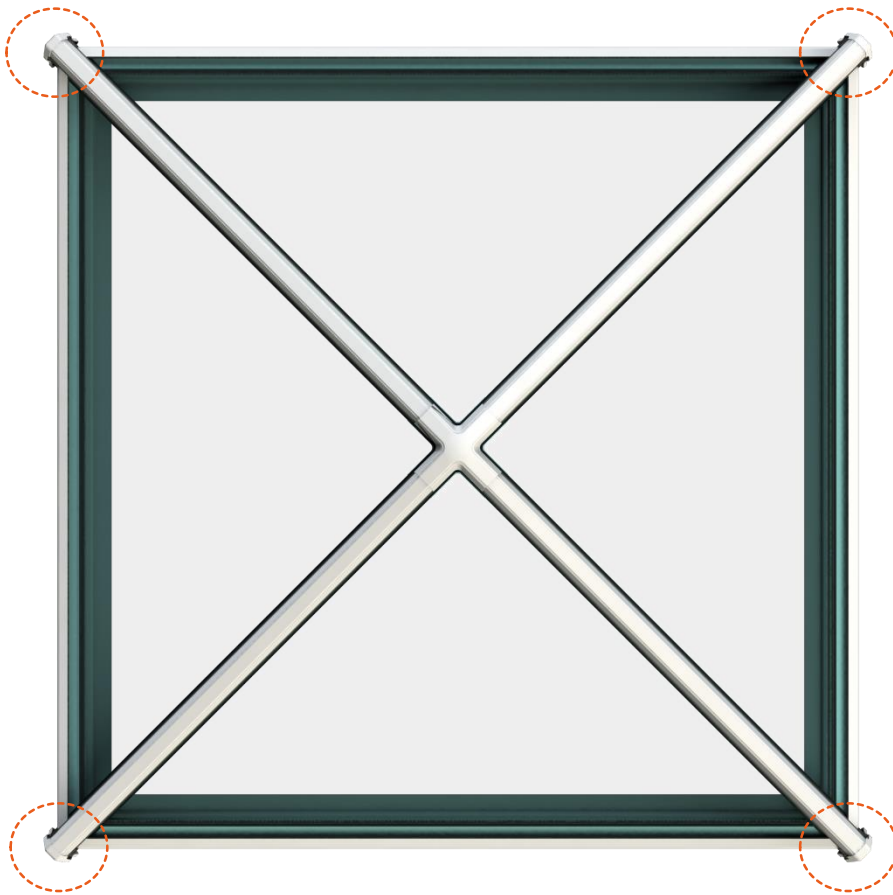


Related Components:



LZMP0052

All bars use the Roof Bar End Caps. The diagrams below show the correct positioning.



3.0 - Installation Supplies and Installer Support

Installation Supplies

Ensure a fully matching Lantern with Liniar's range of approved installation supplies. From the highest quality foam trims to coloured silicone sealants, you can be sure of a perfect match – all covered by the Liniar guarantee.

The range includes PVCu and glass cleaners, adhesives, window boards, fixings and accessories. For full details see www.liniar.co.uk/supplies.



Installer Support

Liniar provides installers with a variety of marketing tools and resources, helping you to grow your own business alongside ours.

PDF copies of brochures, fact sheets and other literature are available to download from the Liniar website at www.liniar.co.uk/downloads. You can also order full boxes by contacting the Liniar sales office.



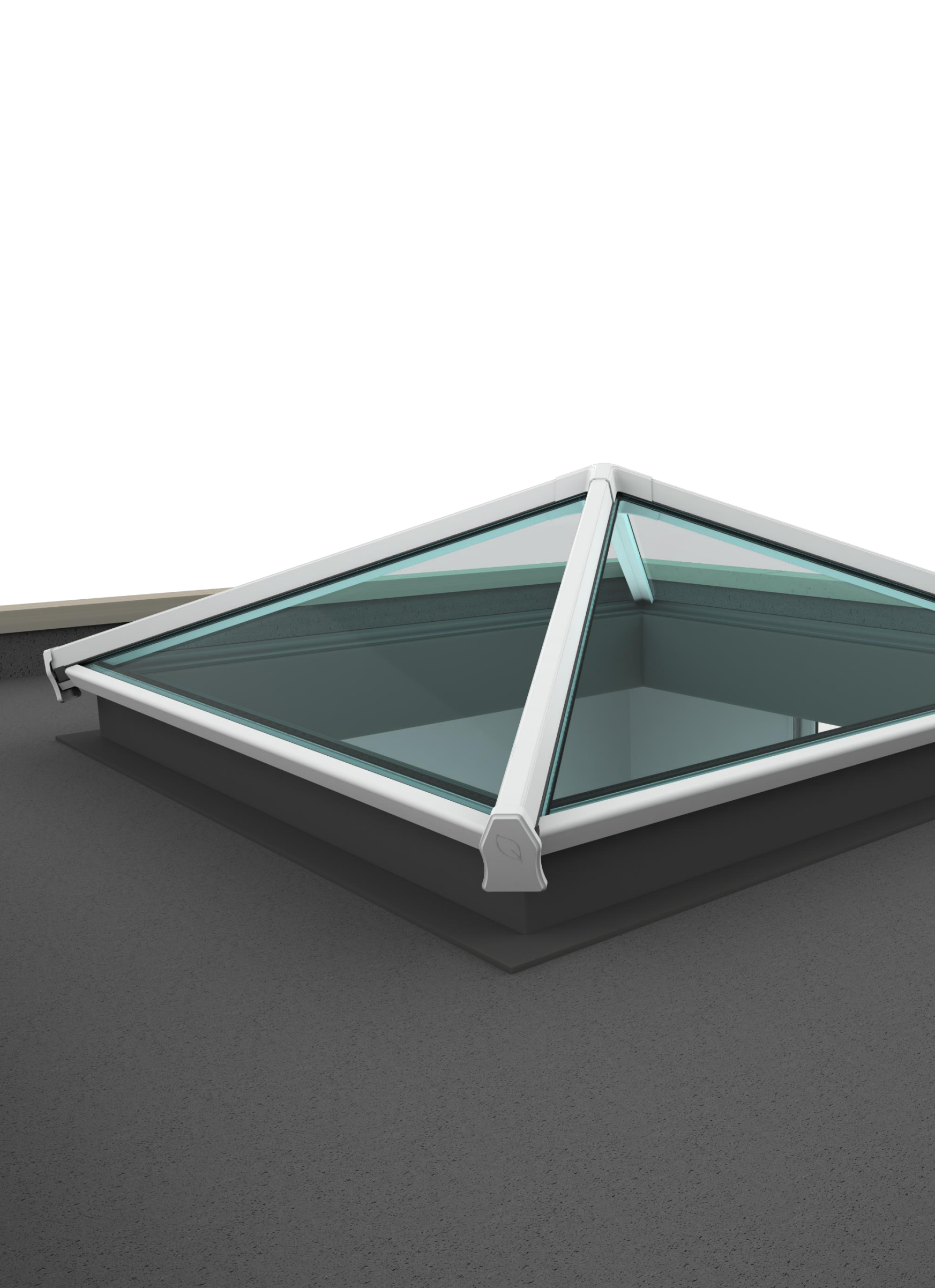
After-sales support is available via our Liniar Roof Maintenance Guide.

Our video library can be found on the Liniar website, featuring a range of sales and installation videos for you to use and show to customers.

Follow Liniar on social media for the latest news and updates:

| | |
|-----------|-----------------|
| Twitter | @LiniarProfiles |
| LinkedIn | Liniar |
| Facebook | LiniarUK |
| Pinterest | LiniarUK |
| Google+ | LiniarUK |
| YouTube | LiniarUK |





Liniar

Flamstead House
Denby Hall Business Park
Denby
Derbyshire DE5 8JX

Tel: +44 (0)1332 883883
Fax: +44 (0)1332 883884
Email: roofs@liniar.co.uk
www.liniar.co.uk/elevate

