



Alumina Installation Guide





Here at Liniar, we love our range of bi-folding doors.

We want to ensure that your customers love them too, so we've created a detailed installation guide to help you fit our lovely doors the way they were intended.

In addition, a detailed installation video can be found by visiting www.liniar.co.uk.

Survey and Installation

Installation must comply with all elements of BS8213-4 Code of Practice for the survey and installation of windows and external doorsets.

There should be a solid structure to fix the frame to, and there must be a lintel above the frame.

No load is to be transferred to any part of the frame.

Prepare the aperture by making sure it is clean – remove any old silicone and brush down the threshold.

Check the aperture's height, width and diagonals to ensure the opening is equal on all sides and square.

To ensure the correct functioning of Alumina bi-folding doors, it is imperative that the instructions in this guide are followed, in the correct order.



Threshold and Cill

1

Use a spirit level and a string line to assess the level of the threshold you are working from to aid fitting the frame at a later stage.

2

Add packers where required and re-check the level.

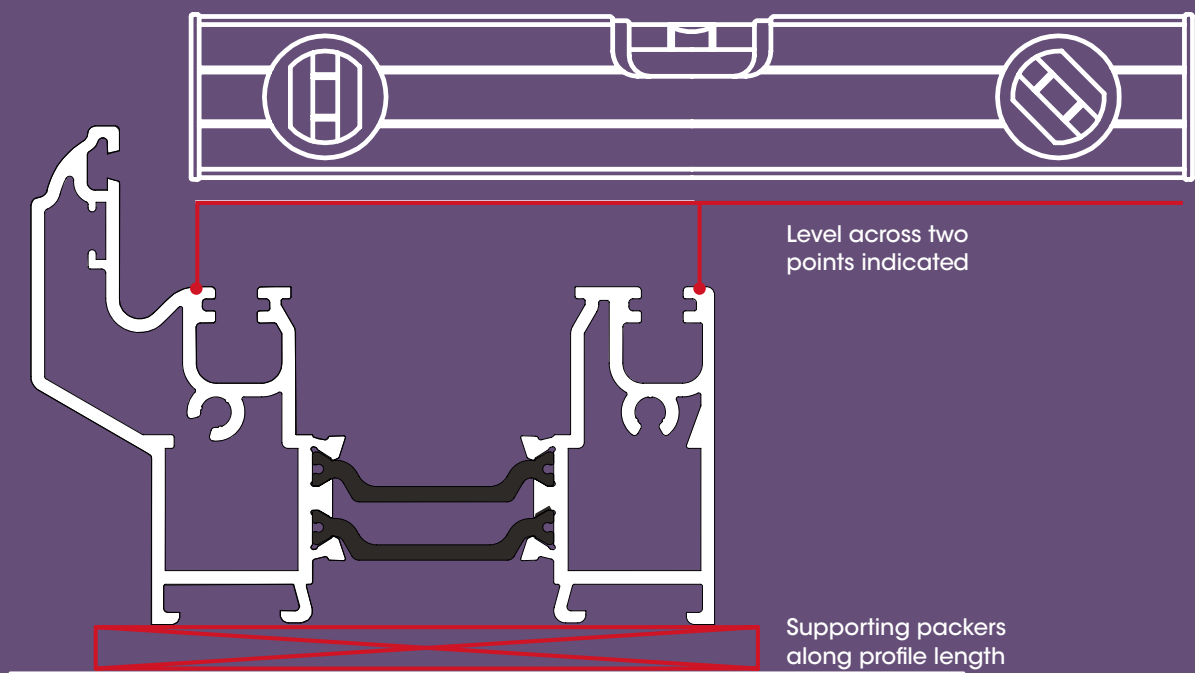
3

In instances where a cill is to be fitted, it is good practice to fit this separately to the frame. This will ensure you have a level and secure cill to work from when fitting the frame.

4

Once level, double check that the door will still have enough clearance on height when it is installed.





Removal of Door Sashes

(Optional Step)

For larger doors you may wish to remove the sashes before installing the outer frame

1

Unscrew the hinges and carefully lift out the sash frames.

2

Make sure you keep all the screws in the correct order to re-assemble later.

3

Alumina doors will require the top rolling mechanism to be unscrewed from the sash and left engaged in the captive top track



Fit the Outer Frame

1

Lift the door into position in the opening and insert packers under the threshold where previously noted

2

To hold the door in place temporarily whilst you level it, loosely pack out the jambs. Keep checking they are level as you go along.

!

There should be no twist or distortion in the jambs and they should be plumb.

3

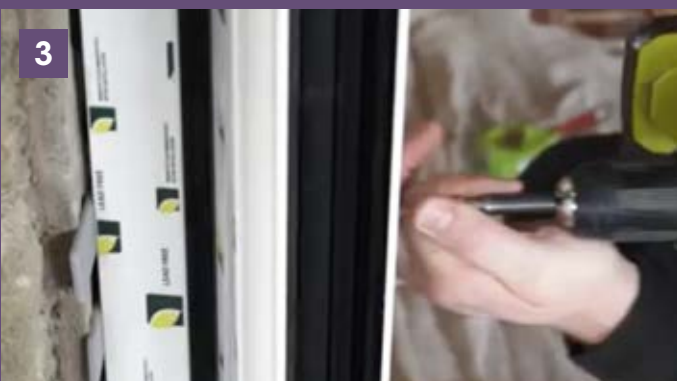
With the packers in place, fix both outer jambs in place with appropriate fixings. Packers must be used at either side of each fixing to help prevent distortion.

4

Fixings should be no closer than 150mm from corners and at 600mm maximum centres, with a minimum of 3 fixings per side.

!

As you work, continue to check for any bows, as well as for plumbness and squareness.



Fix the Threshold

1

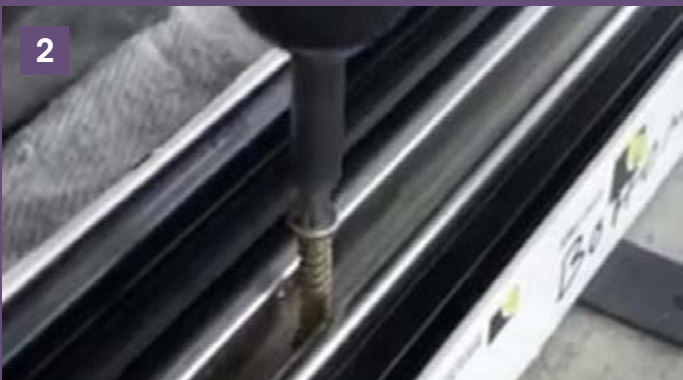
Use silicone around the holes that are drilled through the bottom of the threshold before inserting the screws to prevent water ingress

2

Use appropriate fixings to secure down through the pre-punched drainage holes.

3

Check the level of the threshold once complete.



Fix the Head

1

A timber lat can be used to help ensure that the head is installed parallel to the cill.

2

Fix the head into place, completing the outer frame installation.

3

Once the outer frame is in place, perform a final check of all the measurements again.



Re-install Sashes and Adjust

If you removed the sashes earlier, reinstall them with the following steps.

1 Re-install the sashes you removed earlier ensuring you screw the hinges back on in exactly the same places you originally removed them.

2 Make sure the rollers slot into the threshold correctly as you work.

3 For each section, use all the screws supplied for a strong and secure installation.

4 Assess the gaps between the outer frame and sash at the top and bottom, ensuring they are equal.

5 The door's rolling mechanisms can now be adjusted to increase or reduce any door gaps if required.

Use an allen key to adjust up or down as necessary. Once again check the door gaps.



Commence Glazing

1

Before glazing, remove all beads from the first hinged sash. Take care to note where the beads are removed from.

2

Fit the Liniar glazing platforms in preparation for toe and heeling.

!

Alumina's unique design means that foiled doors come complete with PVC beads which will easily rotate out of the sash.

Powder coated doors will come with a conventional aluminium type bead and wedge gasket.



Fit the Glazing

1

Lift the glass onto the Liniar glazing platforms from the inside, and pack as required.

2

All sashes should be toe and heeled to maintain equal and parallel gaps on the head and the threshold.

3

Add silicone between each vertical platform to help keep them in place.

4

Once the glass is in place, the beading can be replaced, starting with the shortest pieces first.

5

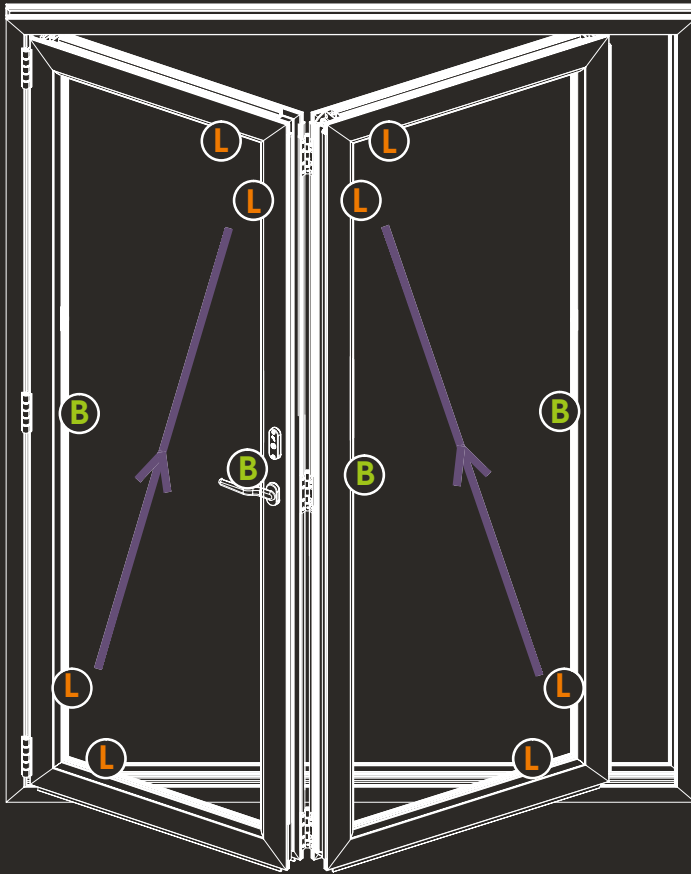
If the door has been supplied with PVC beads, the longest beads can easily be arched and tapped into place using a plastic mallet. We recommend starting in the corners, and working towards the middle.

6

Work on each sash individually, repeating the toe & heeling process for all sashes and ensuring all the door gaps are equal and parallel as you work.



Toe and Heeling Guide



L Linear load bearing platforms **must be used** to keep door square and level.

B Bracing platforms to prevent movement and provide rigidity to the door.



Check Operation and Adjust

1

Check the finished doors to make sure the operation is perfect. The rolling mechanism should be smooth, there should be equal gaps between each door, and all the seals should be weather-tight

2

If adjustment is needed, any vertical door gap adjustments needed can be carried out with the use of 1mm packers.

3

You can remove or add these packers from each hinged point in order to give you plus or minus 1mm of adjustment where you need it.

!

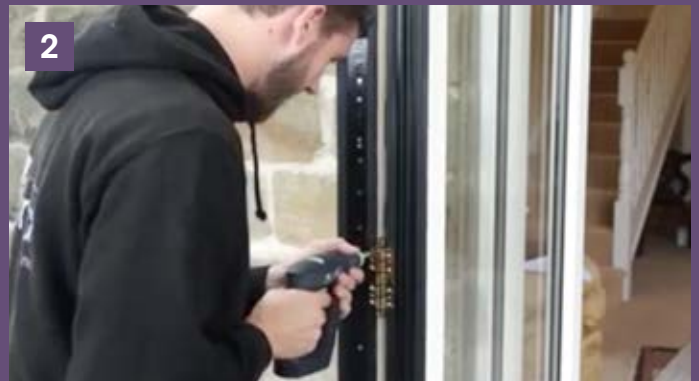
Remember to equally space these packers on the hinge, and use no more than 3 in total per hinge.

4

The shootbolt can also be adjusted by removing the four screws and the plastic cover. Twist as necessary then replace the cover and screw back into place.

5

Twisting by 90 degrees will give a 1mm increase or decrease in compression against the outer frame.





Perform Final Checks and Hand Over

1

Check that the handles and locking mechanisms operate smoothly on each door, that the bi-fold action is smooth and free running and that the locks operate correctly when closed.

2

The door magnets are critical to the continued seamless operation of the Alumina Bi-fold door, so it's important to check they are fully engaged when the doors are open.

3

Finally, the rolling mechanism won't work smoothly if there is any debris in the door track, so make sure you clean it properly with a soft brush.

The installation is now complete, and the homeowners can enjoy their new Alumina doors.

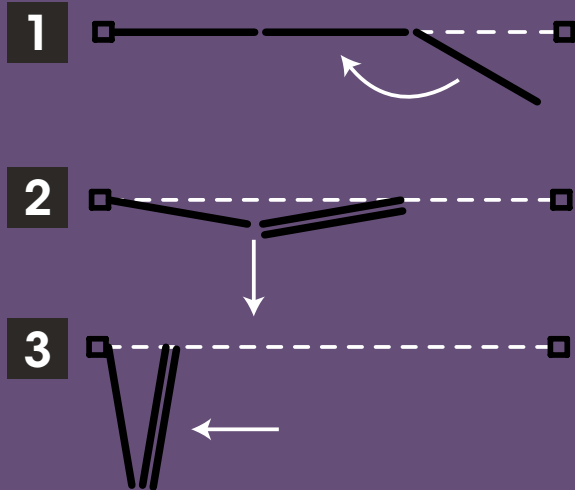
Don't forget to leave them with the guide to operating and caring for their new bi-fold, which can be downloaded from the Alumina website.

For more information, please visit alumina.liniar.co.uk.



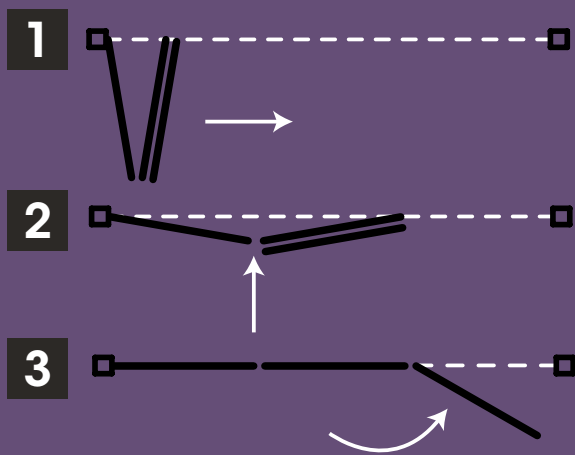
Operation and Maintenance

Opening Operation



Before step 2, the door must be fully engaged with magnets.

Closing Operation



Before step 2, locking mechanism must be fully engaged.

Maintenance

- Roller mechanisms carrying the door panels are fitted with sealed stainless steel bearings and require no lubrication.
- Ensure top and bottom tracks are kept free from debris or obstacles which may impair the function of the product.
- Door locking mechanisms to be cleaned and any moving parts to be lubricated with a light machine oil at least once a year and more frequently where appropriate.
- For PVCu parts clean regularly with soap and water.







Alumina by Liniar
Flamstead House
Denby Hall Business Park
Denby
Derbyshire
DE5 8JX

Tel: 01332 883900
Fax: 01332 883901
Email: sales@liniar.co.uk

www.alumina.liniar.co.uk